

# November LMI update featuring Employment and jobs report for September 2021



<https://www.gloscareershub.com/>

# Contents

## Employment and Jobs report

- EMSI Jobs postings Slides 5-8
- Types of jobs posted Slides 9-10
- Top companies posting and skills required Slide 11-12
- Claimant count Slides 13-16
- Furloughed workers Slides 17 – 23

## Gloucestershire in data November 2021

- Gloucestershire in data November 2021: I.T. Sector in Gloucestershire Slides 24 - 28

**Note:** By using this information with your students, you are helping your school/colleges to achieve Gatsby Benchmark 2: Learning from career and labour market information. Please remember to update your termly Compass + return with this in mind.

# EMSI/Burning Glass LMI via Careers Coach

Please note that the Careers Coach tool which can be found at the Gloucestershire Skills Portal also utilises up to date EMSI/Burning Glass LMI and job postings for Gloucestershire to support you when working with students to explore individual career types. To find out more visit:

<https://www.skillsportalglos.com/career-coach/>

To download an information sheet visit:

<https://drive.google.com/file/d/1JXDSDszS9tZseymiooWMzVjzzlCwThbw/view>

To book a demonstration of Careers Coach e-mail: [education@gfirstlep.com](mailto:education@gfirstlep.com)

## Welcome to Career Coach for Gloucestershire

With live Gloucestershire and national labour market information brought to you by Emsi

### Take Career Assessment

Take a Career Assessment to learn about yourself and Career Coach will give you career suggestions based on your interests.

Take the Assessment

### Browse Careers

Browse or search for careers and we will give you relevant data on wages, employment, and the training you need.

Search for Careers



# Headlines from September 2021 figures



- The Claimant Count in Gloucestershire decreased by 605 persons to 12,725 and the rate decreased to 3.3%
- Job posting numbers for the month of September were around 38,090 which is an increase of around 1,454 job postings when compared to August
- Provisional data shows total number of workers furloughed in Gloucestershire as at the 30<sup>th</sup> September was 8,500 which is down from the August figure of 10,600
- To date Gloucestershire has seen a cumulative total of 113,400 employments supported by the Coronavirus Job Retention Scheme at various times



# EMSI job posting numbers



- Job posting numbers for the month of September 2021 were around 38,090 which is an increase of around 1,454 job postings when compared to August 2021.
- Chart 1 below gives a district overview of total jobs for the month of September, comparing the same month in 2019, 2020 and 2021.
- The number of jobs posted in September 2021 exceeds the same month for previous years, with the exception of Gloucester which is seeing slightly fewer when compared to 2019.



# EMSI job posting numbers

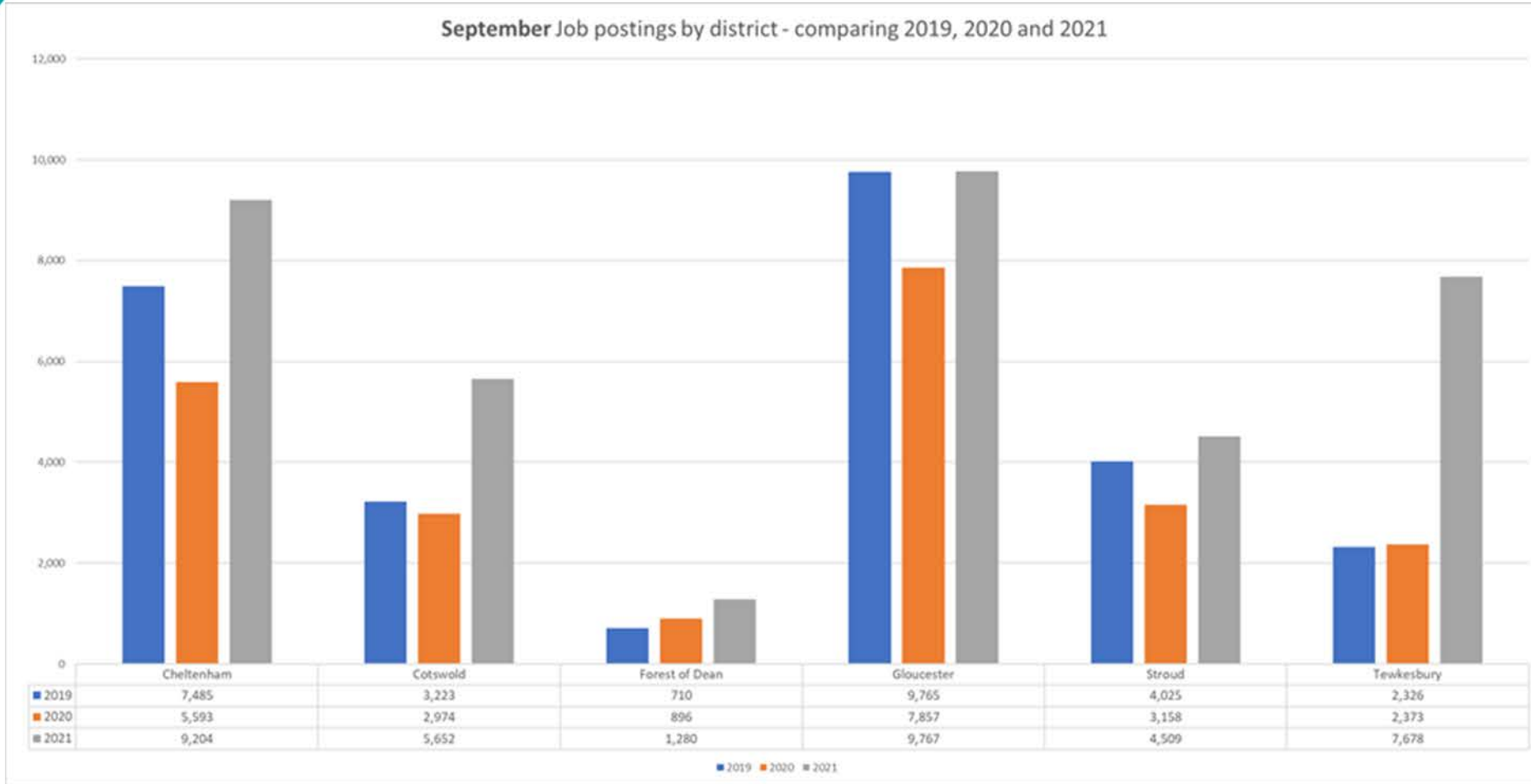


Chart I: District overview of total jobs in September 2021 when compared with September 2020 and September 2019



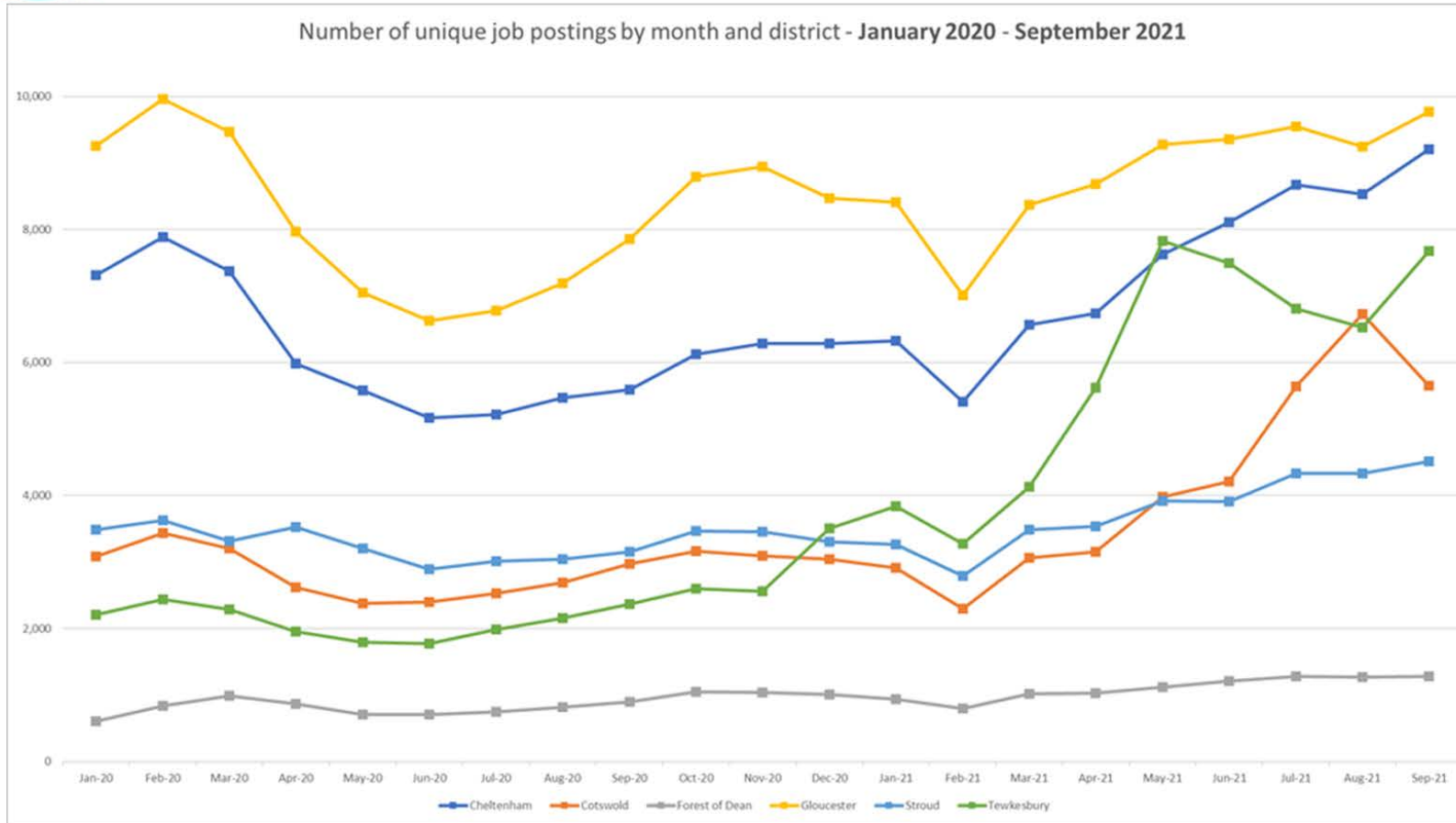
# EMSI job posting numbers



- Chart 2 below shows total jobs by district from January 2019 to September 2021, with most districts displaying a similar trend over the past few months.
- However, Cotswold job posting numbers have dropped back slightly and Tewkesbury numbers are seeing an upward trend again.



# EMSI job posting numbers



Please note – job posting numbers are based on snapshot data taken on the 18<sup>th</sup> October numbers are provisional and subject to change. The information is continually being cleaned and validated, but job posting numbers provide a good indication on how the job market is performing.

EMSI delivers real time access to job vacancies from a comprehensive range of sources including job boards, employer sites, newspapers, public agencies etc. Data extraction and analysis technologies mine and code data from each job listing to provide analysis on industries, occupations, skills and qualifications. However, the tool will inevitably not capture all vacancies.

Source: EMSI

Chart 2: Number of job postings by district for the past 12 months





# Types of jobs posted



- Chart 3 below shows the net change in the number of job postings by top level occupation (two-digit SOC), comparing August to September 2021.
- Only a few occupations have seen a decrease in September when compared to August, with some large increases seen in Administrative Occupations (387), Caring Personal Service Occupations (223) and Elementary Administration and Service Occupations (210).



# Types of jobs posted

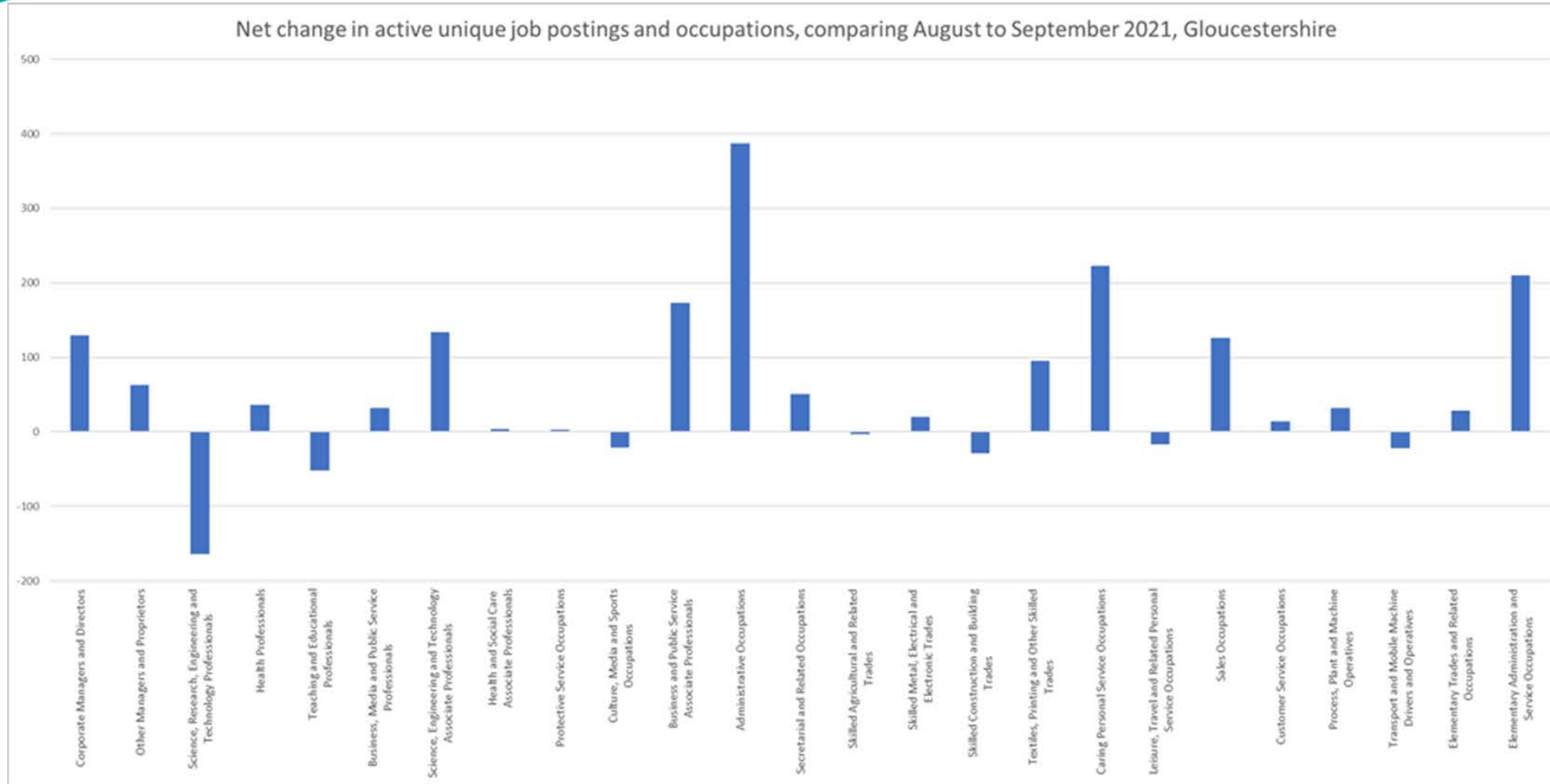


Chart 3: Net change in the number of job postings by two-digit (SOC) code, comparing September 2020 and September 2021.



# Top companies posting and skills required (September 2021)

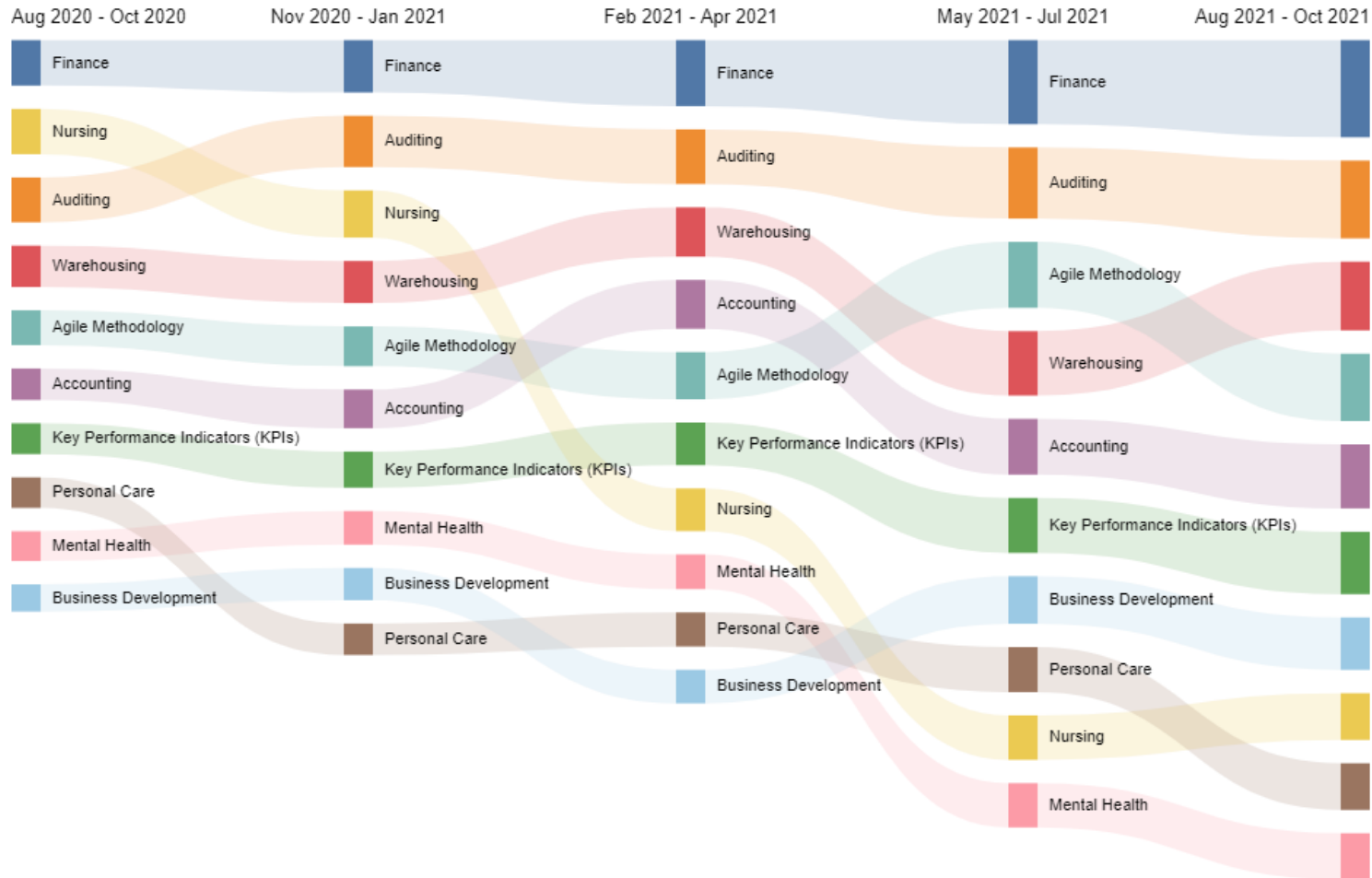


- **The top companies posting jobs in September include;** NHS, Gloucestershire Hospitals NHS Foundation Trust, Gloucestershire Health and Care NHS Foundation Trust and Gloucestershire Education Department – please note that we have not included employment agencies in top companies posting, employment agencies do however form part of the total jobs posted in the report.
- **Top posted occupations in September:** Programmers and software development professionals, Care workers and home carers. Nurses, Sales accounts and business development managers and Chefs.
- **Top posted job titles** include; Support Workers, Warehouse Operatives, Care Assistants, Registered Nurses and Production Operatives
- **Top hard skills** listed in job postings include; Finance, Auditing, Agile Methodology, Accounting and Key Performance Indicators (KPIs)
- **Top common skills** listed include; Communications, Management, Customer Service, Sales and Enthusiasm.



# Top ten skills in Gloucestershire by Quarter August 2020-October 2020 to August 2021-October 2021

Skills help us understand not only what an area excels in, but how it is growing.



Source: EMSI/Burning Glass



# September Claimant Count



- October saw the publication of the September \*Claimant Count figures: Gloucestershire has seen a decrease to 3.3% (the value is expressed as a proportion of residents aged 16-64). The September total now stands at 12,725 compared to the August figure of 13,330 which is a monthly decrease of 605 persons. All districts saw a decrease in the estimated number of unemployed claimants.
- The August figure for the South West was 3.6%, England was 5.1% and the UK figure was 5.0%.
- Chart 4 shows the claimant rate for September 2021 in Gloucestershire



# September Claimant Count

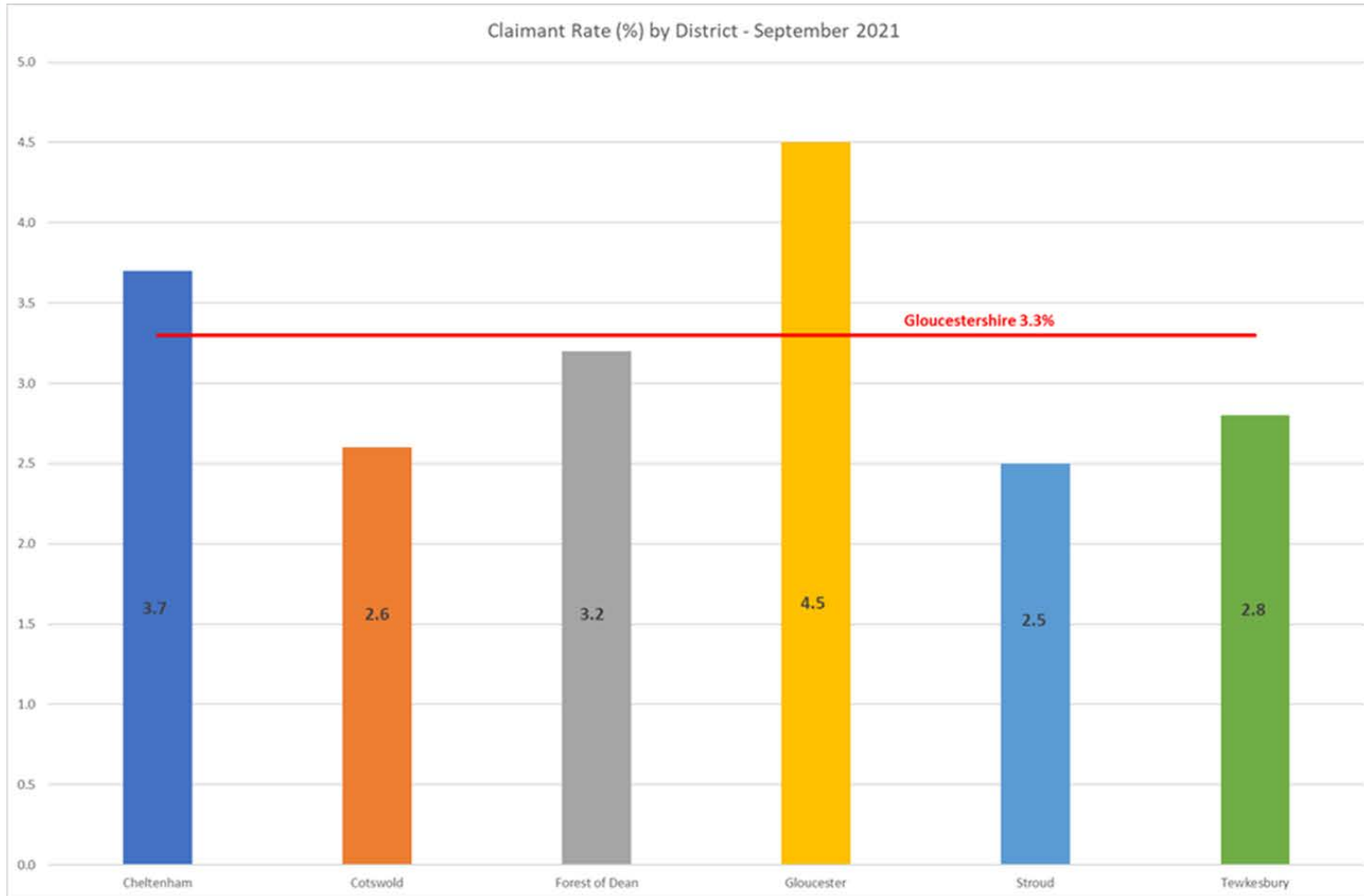


Chart 4: Claimant rate for September 2021 in Gloucestershire



# September Claimant Count



- Chart 5 shows the current claimant rate for Gloucestershire at 3.3%, when compared with all six districts, the South West and United Kingdom.
- The rate for Gloucestershire continues to be below that of the UK and South West.



# September Claimant Count

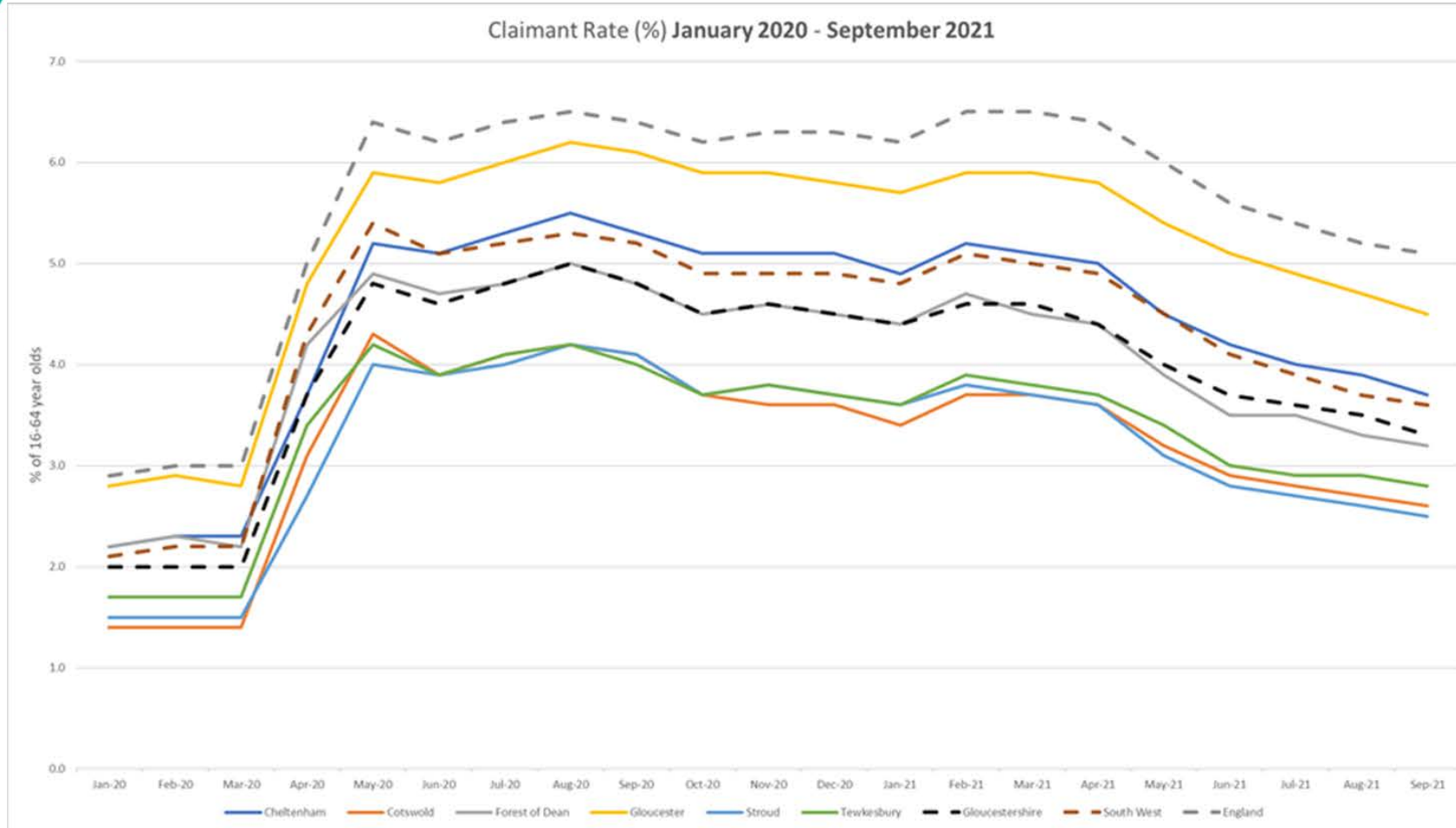


Chart 5: Claimant rate for September 2021 in Gloucestershire compared with South West and UK





# Furloughed workers



- Provisional data shows total number of workers furloughed in Gloucestershire as at the 30<sup>th</sup> September was 8,500 which is down from the August figure of 10,600.
- Also updated this month were the cumulative number of jobs furloughed since the start of the scheme in March 2020, which has now seen a cumulative total of 113,400 Gloucestershire employments supported by the CJRS at various times.
- Chart 5 below shows the district breakdown of workers furloughed at the end of September



# Furloughed workers

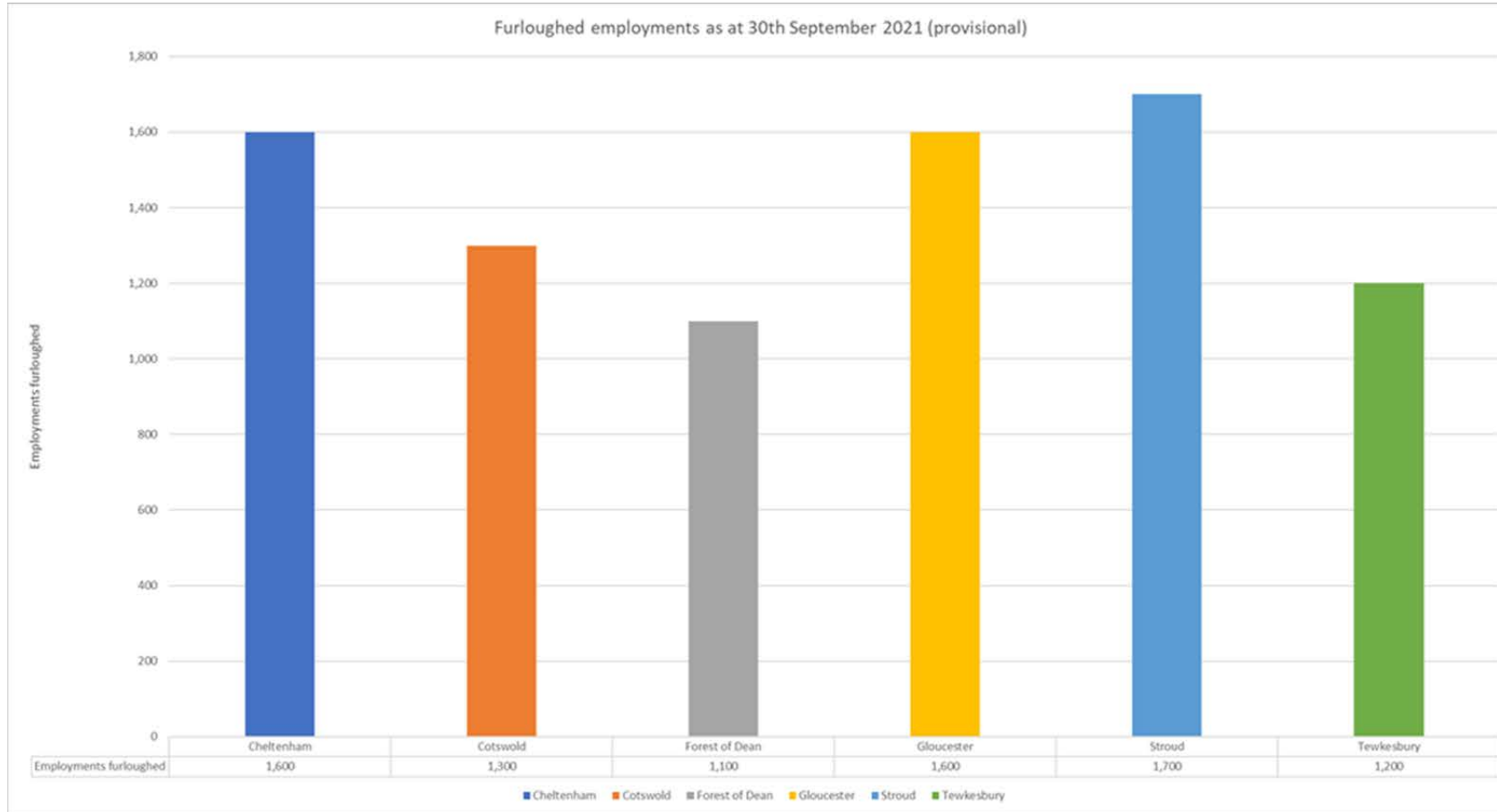


Chart 5: Furloughed employments as at 30<sup>th</sup> September 2021



# Furloughed workers

- Table 2 below compares the September furlough statistics for Gloucestershire against England and the South West

Furloughed employments as at the 30 <sup>th</sup> September 2021 (provisional)			
Area	Employments furloughed	Eligible employments	*Take-up-rate
Gloucestershire	8,500	275,700	3%
South West	71,600	2,369,400	3%
England	964,600	23,881,800	4%

*\*Take up rate is the percentage of workers furloughed, as a proportion of those eligible employments.*

Table 2: Furloughed statistics for Gloucestershire compared with England and South West as at 30<sup>th</sup> September 2021



# Furloughed workers

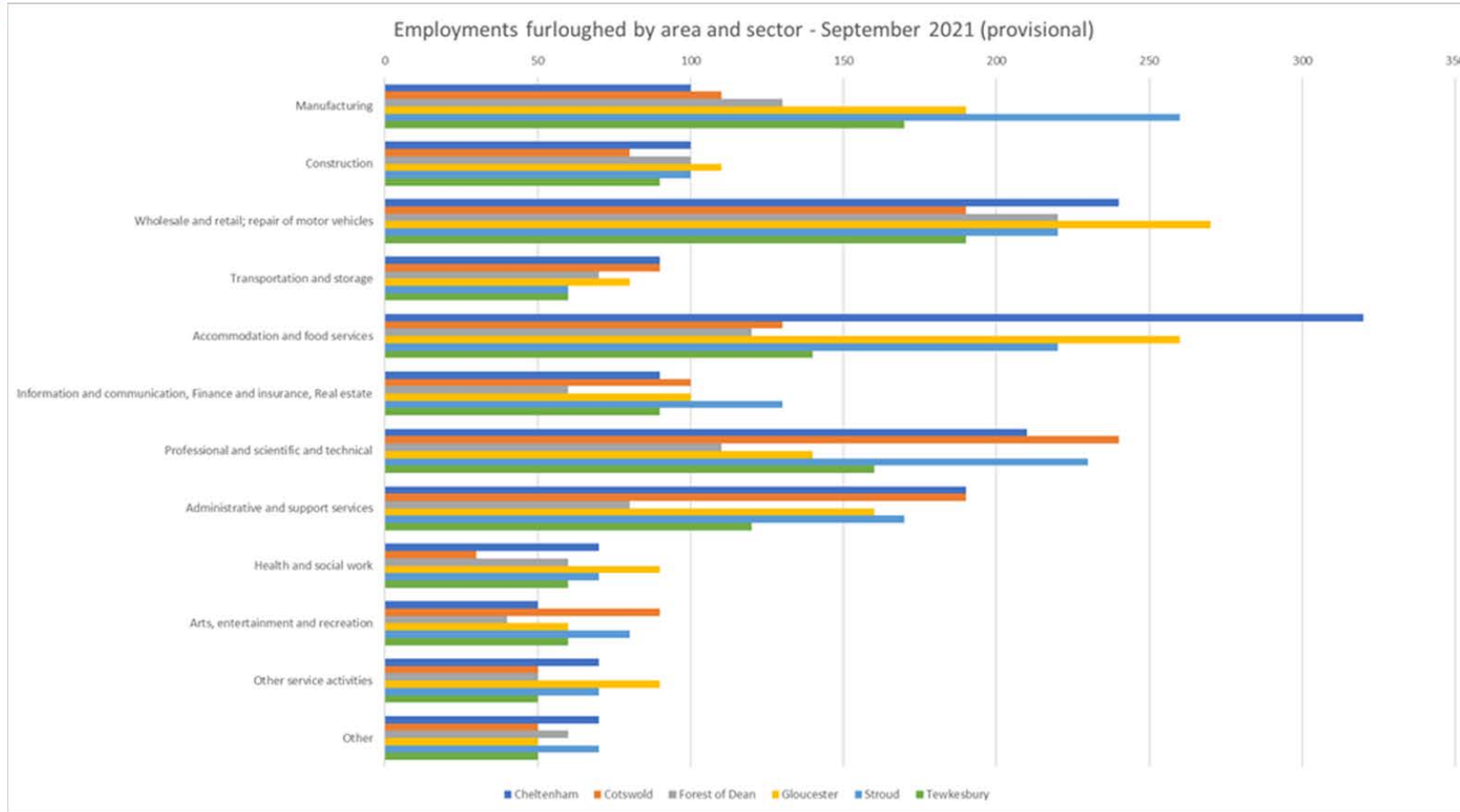


Chart 6 displays the number of furloughed workers by broad sector and by area as at the end of September 2021. The accommodation and food services sector continues to see some of the largest numbers of furloughed employments, but has seen an overall decrease of 400 compared to August figures.

Chart 6: Furloughed workers in Gloucestershire



# Furloughed workers



Employments furloughed by LA and sector - September 2021 (provisional)	Cheltenham	Cotswold	Forest of Dean	Gloucester	Stroud	Tewkesbury	Gloucestershire
Manufacturing	100	110	130	190	260	170	970
Construction	100	80	100	110	100	90	570
Wholesale and retail; repair of motor vehicles	240	190	220	270	220	190	1310
Transportation and storage	90	90	70	80	60	60	440
Accommodation and food services	320	130	120	260	220	140	1190
Information and communication, Finance and insurance, Real estate	90	100	60	100	130	90	570
Professional and scientific and technical	210	240	110	140	230	160	1090
Administrative and support services	190	190	80	160	170	120	900
Health and social work	70	30	60	90	70	60	380
Arts, entertainment and recreation	50	90	40	60	80	60	370
Other service activities	70	50	50	90	70	50	360
Other	70	50	60	50	70	50	360

Table 3 shows the number of furloughed workers by broad sector and by district at the end of September 2021

Table 3: Furloughed workers in Gloucestershire



# Furloughed workers



- Chart 7 Below compares the number of furloughed workers by sector and district, looking at the net change in furloughed workers in September compared to August.
- There continues to be a decrease in the number of furloughed employments across the majority of sectors, with the accommodation and food services and manufacturing sectors both seeing the largest decrease.



# Furloughed workers

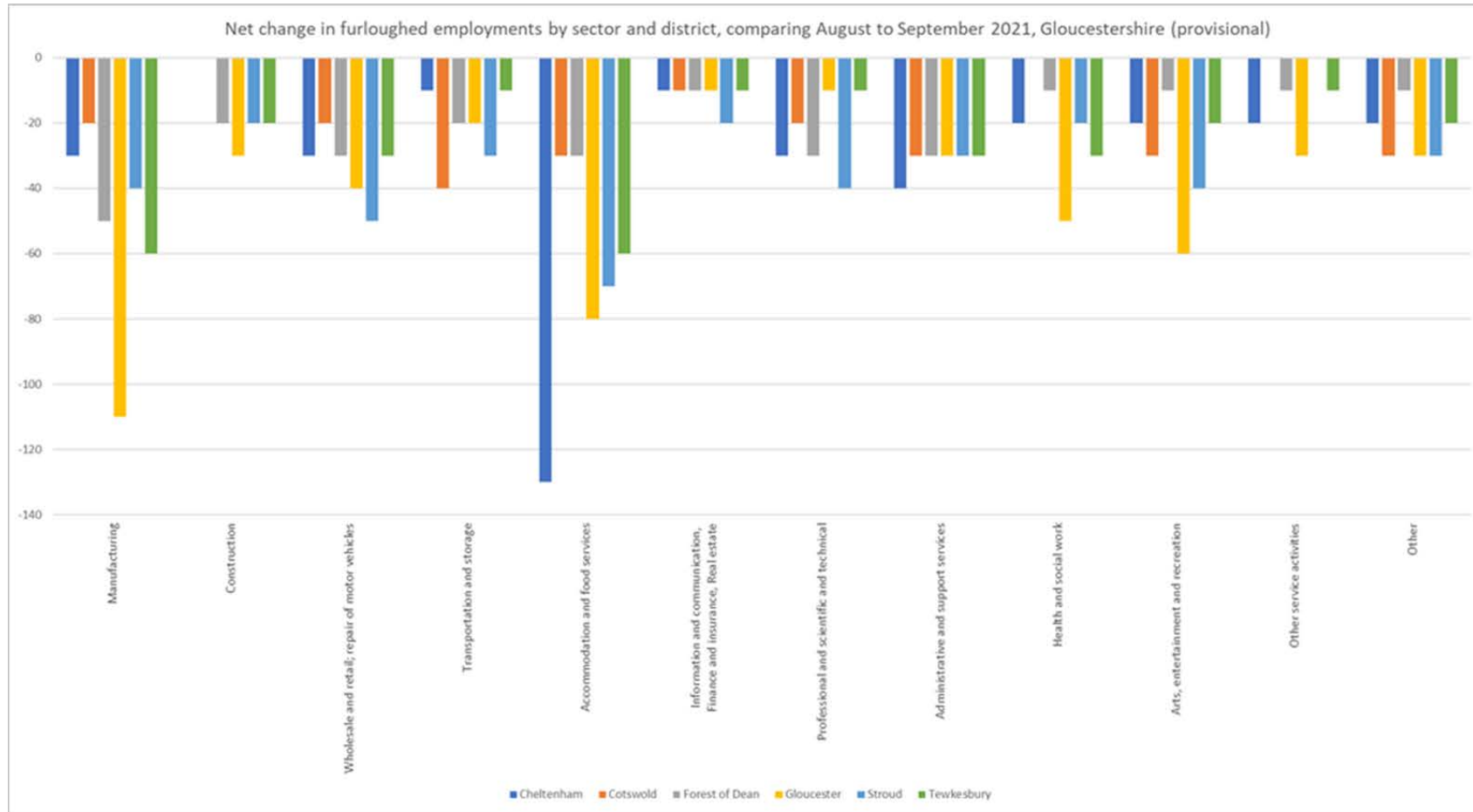


Chart 7 compares the number of furloughed workers by sector and district by looking at the net change in furloughed workers in September compared to August

Chart 7: Furloughed workers by district

# Gloucestershire in data November 2021: I.T. Industry in Gloucestershire



<https://www.gloscareershub.com/>



The following data gives a snapshot of levels of employment in the I.T. sector in Gloucestershire at November 2021



# I.T. activities by 4-digit SIC

Chart 8 below illustrates that the following SIC (Standard industrial Classification) have been used to describe employment in the sector in Gloucestershire.

SIC Code	Description
4741	Retail Sale of Computers, Peripheral Units and Software in Specialised Stores
6203	Computer Facilities Management Activities
5821	Publishing of Computer Games
5829	Other Software Publishing
6201	Computer Programming Activities
6202	Computer Consultancy Activities
6209	Other Information Technology and Computer Service Activities
6311	Data Processing, Hosting and Related Activities
6312	Web Portals
9511	Repair of Computers and Peripheral Equipment

Chart 8: I.T. sector in Gloucestershire by SIC classification



# I.T. activities by 4-digit SIC codes



Chart 9 below illustrates the local dispersion and growth and change in jobs in the sector between 2019 and 2020 in Gloucestershire.

Local Authority	Local Authority Name	2019 Jobs	2020 Jobs	2019 - 2020 Change	2019 - 2020 % Change
E07000078	Cheltenham	2,501	2,417	-84	-3%
E07000079	Cotswold	1,469	1,425	-44	-3%
E07000081	Gloucester	1,454	1,459	5	0%
E07000083	Tewkesbury	1,415	1,397	-18	-1%
E07000082	Stroud	1,092	1,060	-32	-3%
E07000080	Forest of Dean	350	346	-4	-1%
		8,281	8,104	-177	-2%

Source:  
EMSI/Burning Glass

Chart 9 employment in the I.T. sector by Gloucestershire district



# Location of I.T. jobs in the county

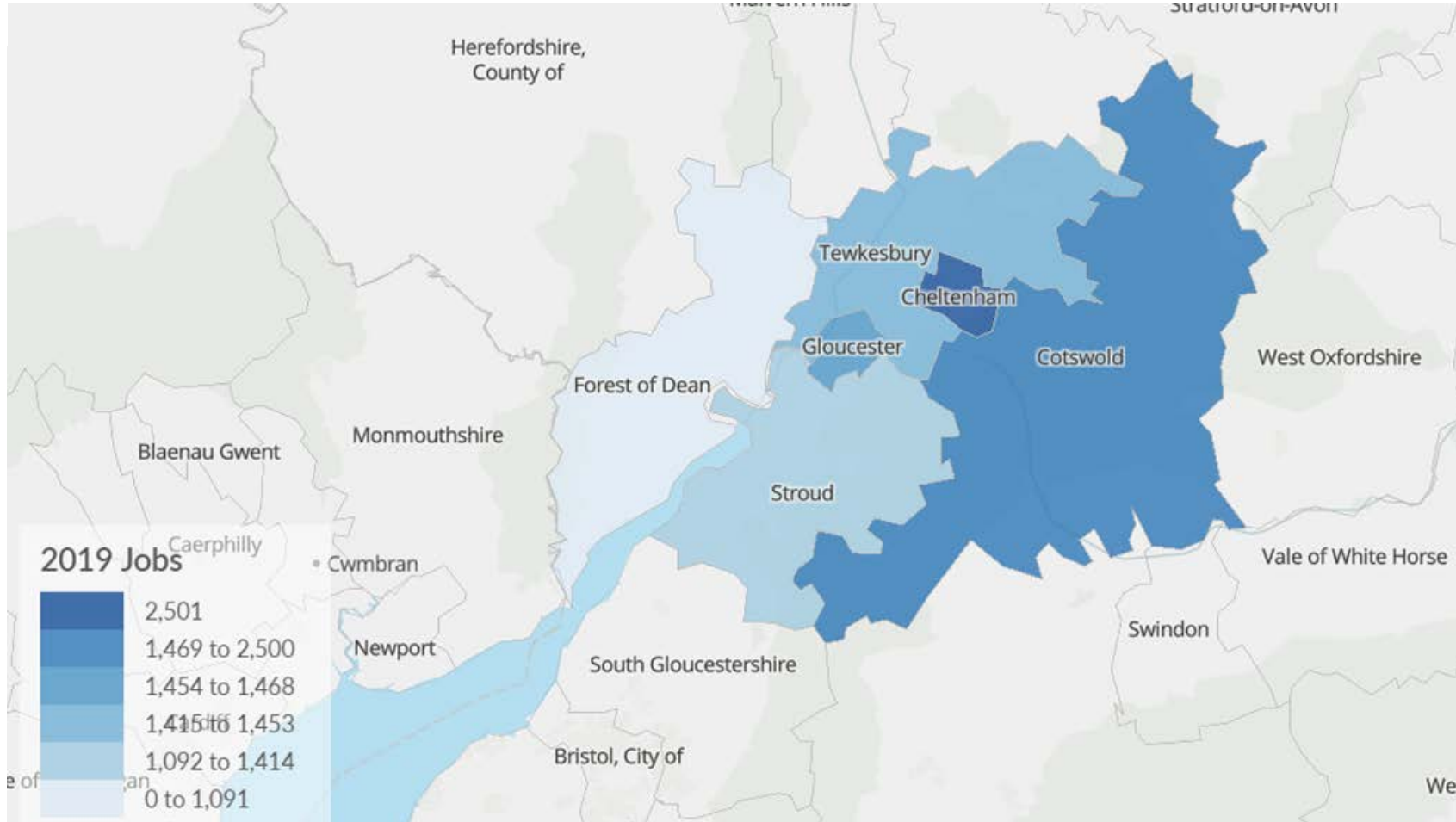


Chart 10 illustrates the local dispersion of jobs in the sector in 2019 in Gloucestershire.

Source:  
EMSI/Burning Glass



<https://www.gloscareershub.com/>