

Employment and jobs report for January 2021



<https://www.gloscareershub.com/>

Contents

- EMSI Jobs postings
- Types of jobs posted
- Top companies posting and skills required
- Claimant count
- Furloughed workers
- Brief 2020 overview in figures

EMSI LMI via Careers Coach

Please note that the Careers Coach tool which can be found at the Gloucestershire Skills Portal also utilises up to date EMSI LMI and job postings for Gloucestershire to support you when working with students to explore individual career types. To find out more visit:

<https://www.skillsportalglos.com/career-coach/>

The screenshot shows the homepage of the Career Coach for Gloucestershire. At the top left is the gfirst LEP logo with the tagline 'growing gloucestershire'. To the right are links for 'Search', 'Login', and a 'Sign Up' button. Below the header is a navigation menu with 'Assessment', 'Careers', and 'CV Builder'. The main heading reads 'Welcome to Career Coach for Gloucestershire' with a sub-heading 'With live Gloucestershire and national labour market information brought to you by Emsi'. Two main content boxes are visible: 'Take Career Assessment' and 'Browse Careers'. The 'Take Career Assessment' box contains the text 'Take a Career Assessment to learn about yourself and Career Coach will give you career suggestions based on your interests.' and a green button labeled 'Take the Assessment'. The 'Browse Careers' box contains the text 'Browse or search for careers and we will give you relevant data on wages, employment, and the training you need.' and a search input field with a magnifying glass icon.



Headlines from January 2021 figures



- Job posting numbers for the month of January were around 25,693 which is 0.9% lower when compared to January 2020. The Forest of Dean and Tewkesbury have seen an increase in the number of job posts when compared to the same month last year
- The total number of workers furloughed in Gloucestershire as at the 31st December was 34,400. Provisional figures for the end of January show this to be 44,100
- The Claimant Count in Gloucestershire decreased by 330 persons to 16,985 and the rate in January was 4.4%



EMSI job posting numbers



- Job posting numbers for the month of January were around 25,693 which is 0.9% lower when compared to January 2020.
- Both The Forest of Dean and Tewkesbury have seen an increase in the number of job posts when compared to the same month last year
- Table 1 below illustrates the local trends in January when compared to January 2020 (with December 2020 figures as comparison)



EMSI job posting numbers



Number of unique job postings by district			
January 2021	2020	2021	% comparison to 2020
Cheltenham	7,308	6,323	-13.5
Cotswold	3,080	2,921	-5.2
Forest of Dean	608	944	55.3
Gloucester	9,256	8,408	-9.2
Stroud	3,481	3,264	-6.2
Tewkesbury	2,202	3,833	74.1
	25,935	25,693	5.7

Table 1: District overview of total jobs in January 2021 when compared January 2020

Number of unique job postings by district			
December 2020	2019	2020	% comparison to 2019
Cheltenham	5,605	5,028	-10.3
Cotswold	2,200	2,352	6.9
Forest of Dean	515	932	81.0
Gloucester	7,398	7,136	-3.5
Stroud	2,845	2,787	-2.0
Tewkesbury	1,718	3,199	86.2
	20,281	21,434	5.7

December 2020 comparison



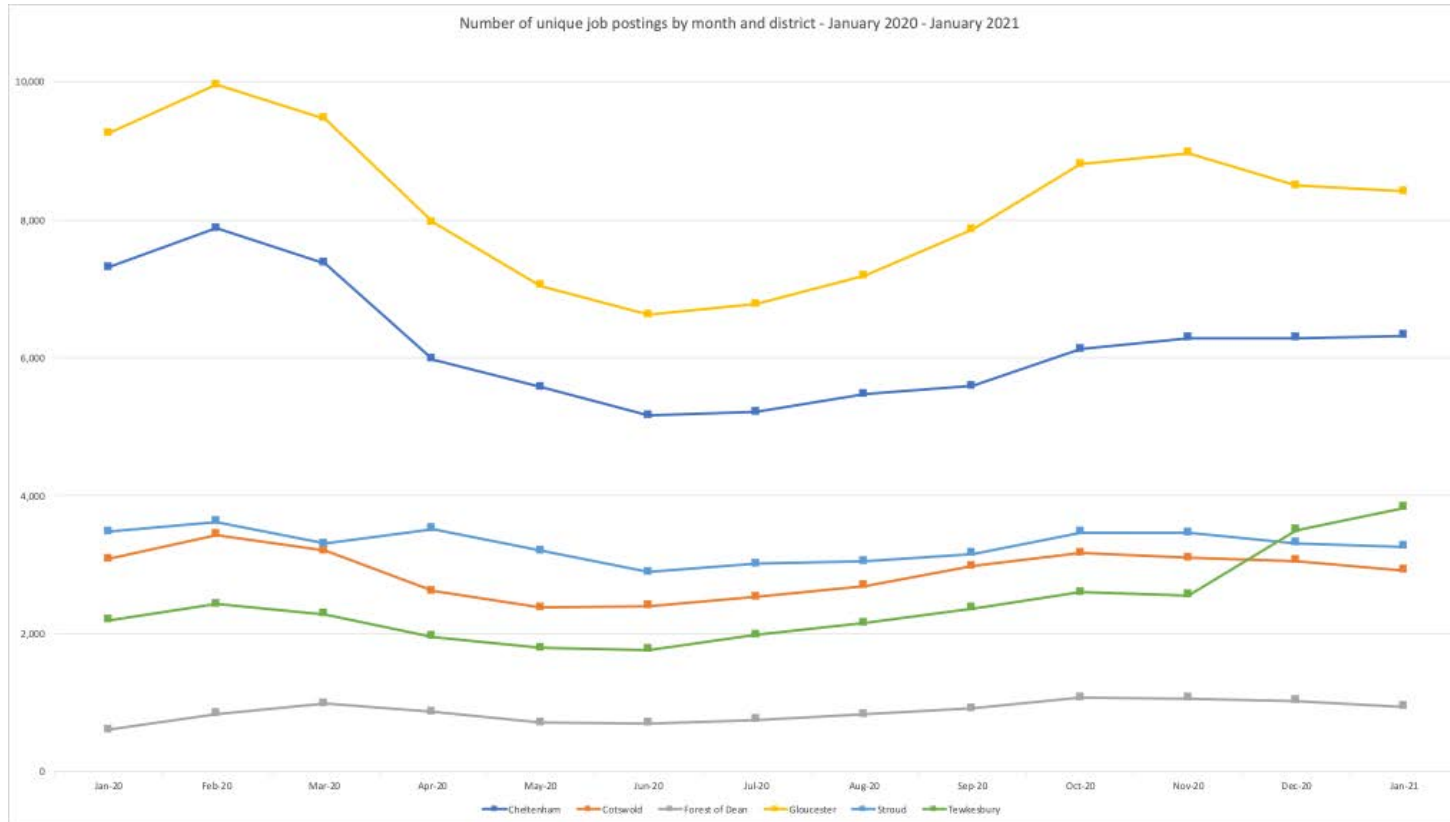
EMSI job posting numbers



- Chart I below shows total jobs by district for the past year, with most districts displaying a similar trend over the past few months.
- However, January 2021 has seen small decreases in Cotswold, Forest of Dean, Gloucester and Stroud when compared to December 2020.
- Tewkesbury stands out, having seen another increase in January, in addition to the steep increase seen in December.



EMSI job posting numbers



Please note – job posting numbers are based on snapshot data taken on the 1st March, numbers are provisional and subject to change. The information is continually being cleaned and validated, but job posting numbers provide a good indication on how the job market is performing.

EMSI delivers real time access to job vacancies from a comprehensive range of sources including job boards, employer sites, newspapers, public agencies etc. Data extraction and analysis technologies mine and code data from each job listing to provide analysis on industries, occupations, skills and qualifications. However, the tool will inevitably not capture all vacancies.

Source: EMSI

Chart 1: Number of job postings by district for the past 12 months



Types of jobs posted



- Chart 2 below shows the net change in the number of job postings by top level occupation (two-digit SOC), comparing January 2020 to January 2021.
- Occupations to see the largest increase when compared to last year are Science, Research, Engineering and Technology Professionals, Health Professionals, Skilled Construction and Building Trades and Caring Personal Service Occupations
- There are also several other occupations that have increased compared to January 2020.
- However, Textiles, Printing and Other Skilled Trades has seen the largest decrease.



Types of jobs posted

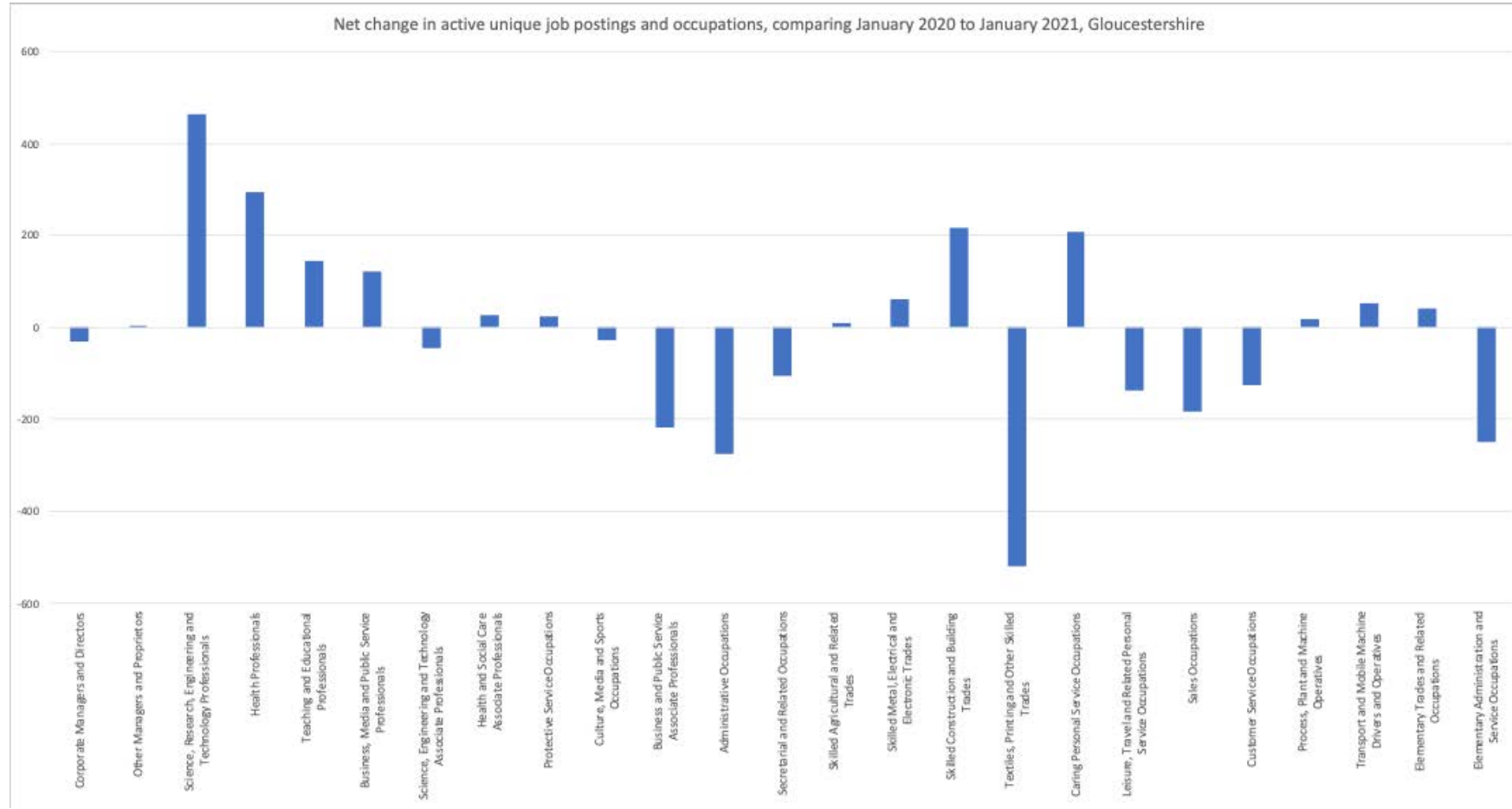


Chart 2: Net change in the number of job postings by two-digit (SOC) code, comparing January 2020 and January 2021.



Top companies posting and skills required (January 2021)



- **The top companies posting jobs in January include**; NHS, Gloucestershire Hospitals NHS Foundation Trust and Gloucestershire County Council – please note that we have not included employment agencies in top companies posting, employment agencies do however form part of the total jobs posted in the report.
- **Top posted occupations in January**: Nurses, Programmers and software development professionals, Care workers and home carers, Sales accounts and business development managers and Book-keepers, payroll managers and wage clerks.
- **Top posted job titles** include; Support Workers, Registered Nurses, Health Care Assistants, Warehouse Operatives and Care Assistants.
- **Top hard skills** listed in job postings include; Auditing, Nursing, Agile Methodology, Accounting and Key Performance Indicators (KPIs)..
- **Top common skills** listed include; : Communications, Management, Customer Service, Sales and Enthusiasm.



January Claimant Count



- Last month saw the publication of the January Claimant Count figures: Gloucestershire has seen Gloucestershire has seen a small decrease to 4.4% from the December figure of 4.5% (the value is expressed as a proportion of residents aged 16-64)
- The January total now stands at 16,985 compared to the December figure of 17,315 which is a monthly decrease of 330.
- All districts saw a small decrease in the estimated number of unemployed claimants since December.
- The January figure for the South West is 4.8%, England was 6.3% and the UK figure was 6.2%.
- Chart 3 shows the claimant rate for January 2021 in Gloucestershire



January Claimant Count

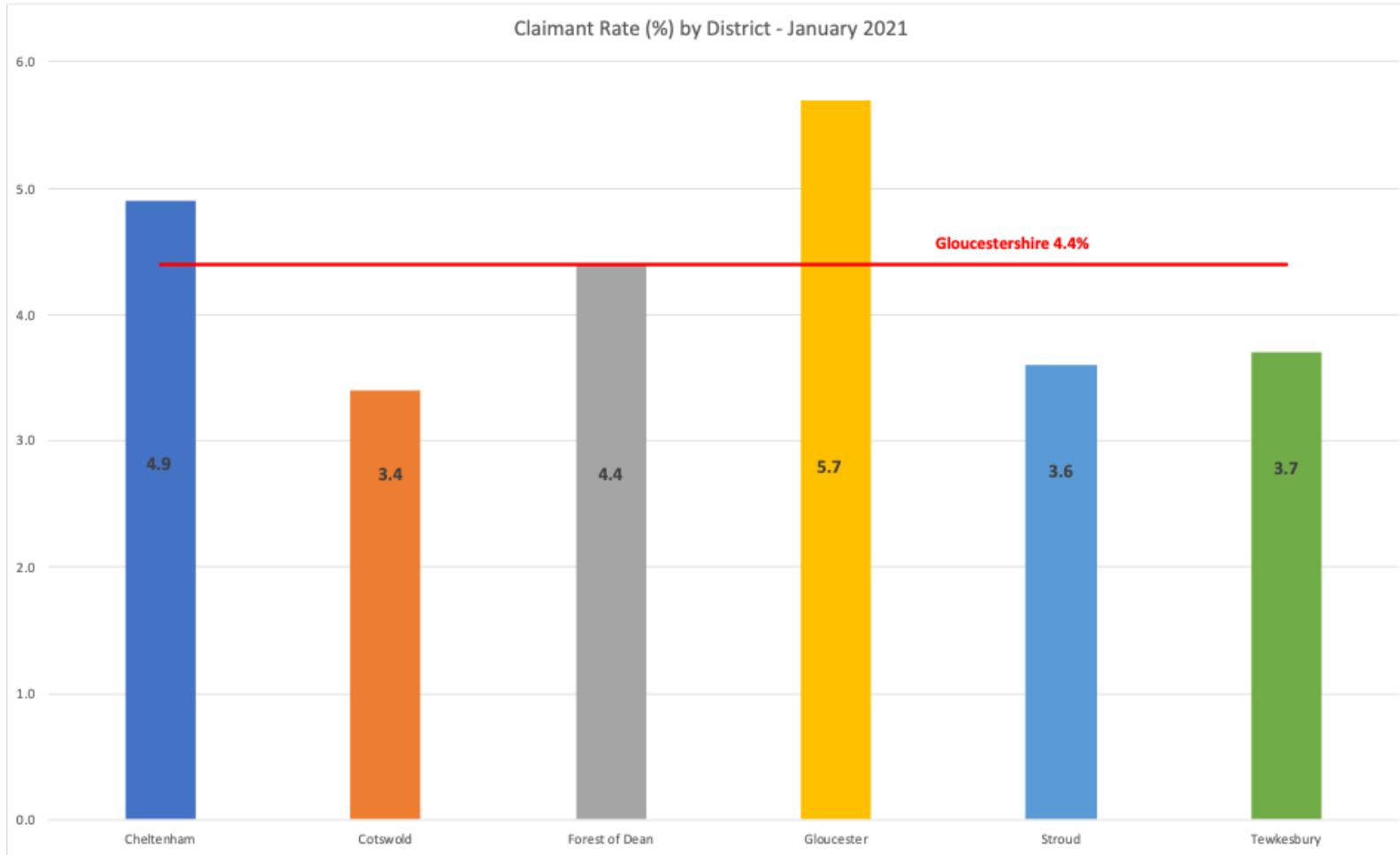


Chart 3: Claimant rate for January 2021 in Gloucestershire



January Claimant Count



- Chart 4 shows the current claimant rate for Gloucestershire at 4.4%, when compared with all six districts, the South West and United Kingdom.
- The rate for Gloucestershire has been below that of the UK and South West for the past 12 months.



January Claimant Count

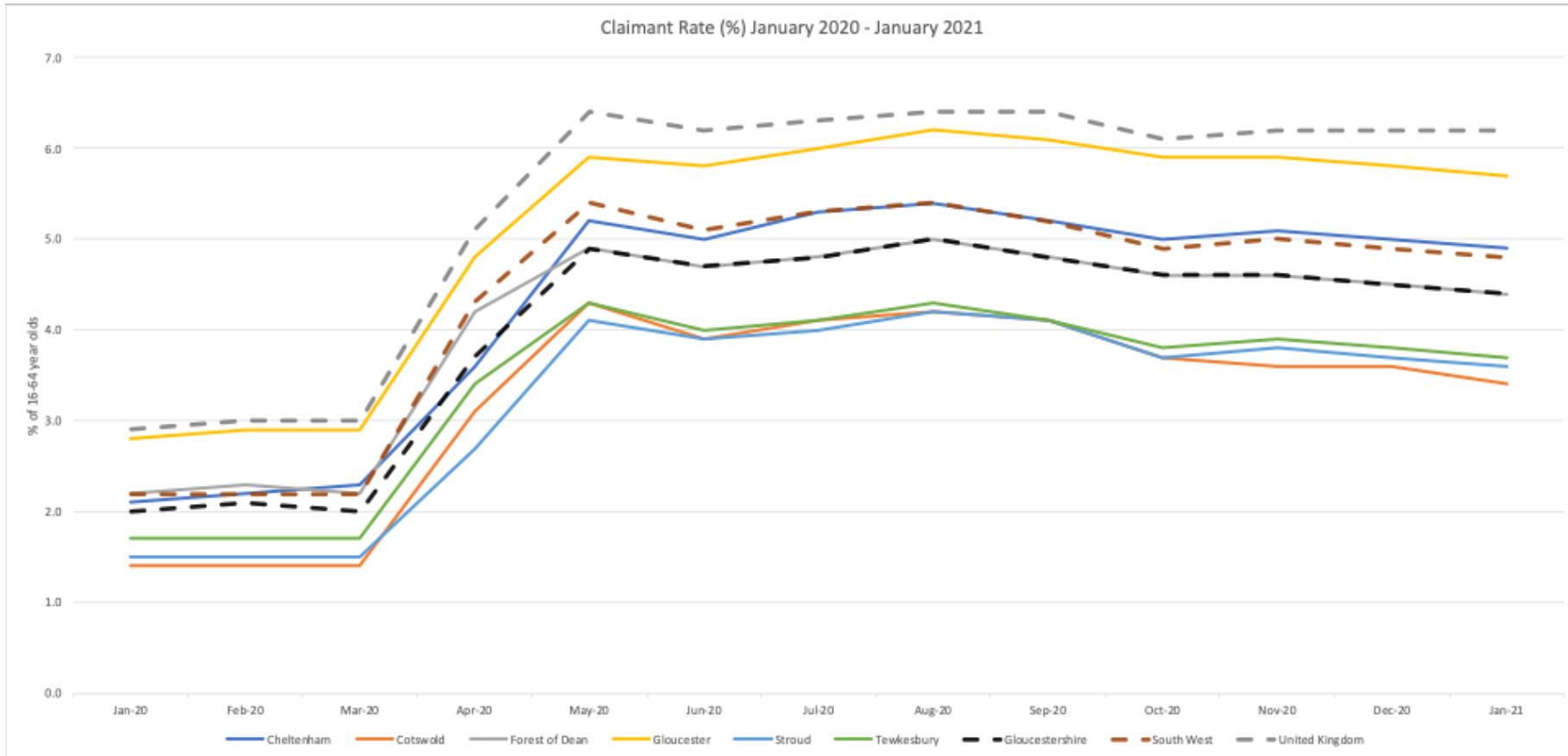


Chart 4: Claimant rate for January 2021 in Gloucestershire compared with South West and UK



Furloughed workers



- The total number workers furloughed in Gloucestershire as at the 31st December was 34,440 and provisional data released shows this figure to be 44,100 as at the 31st January 2021.
- In Chart 5 below shows the district breakdown of workers furloughed at the end of December.



Furloughed workers

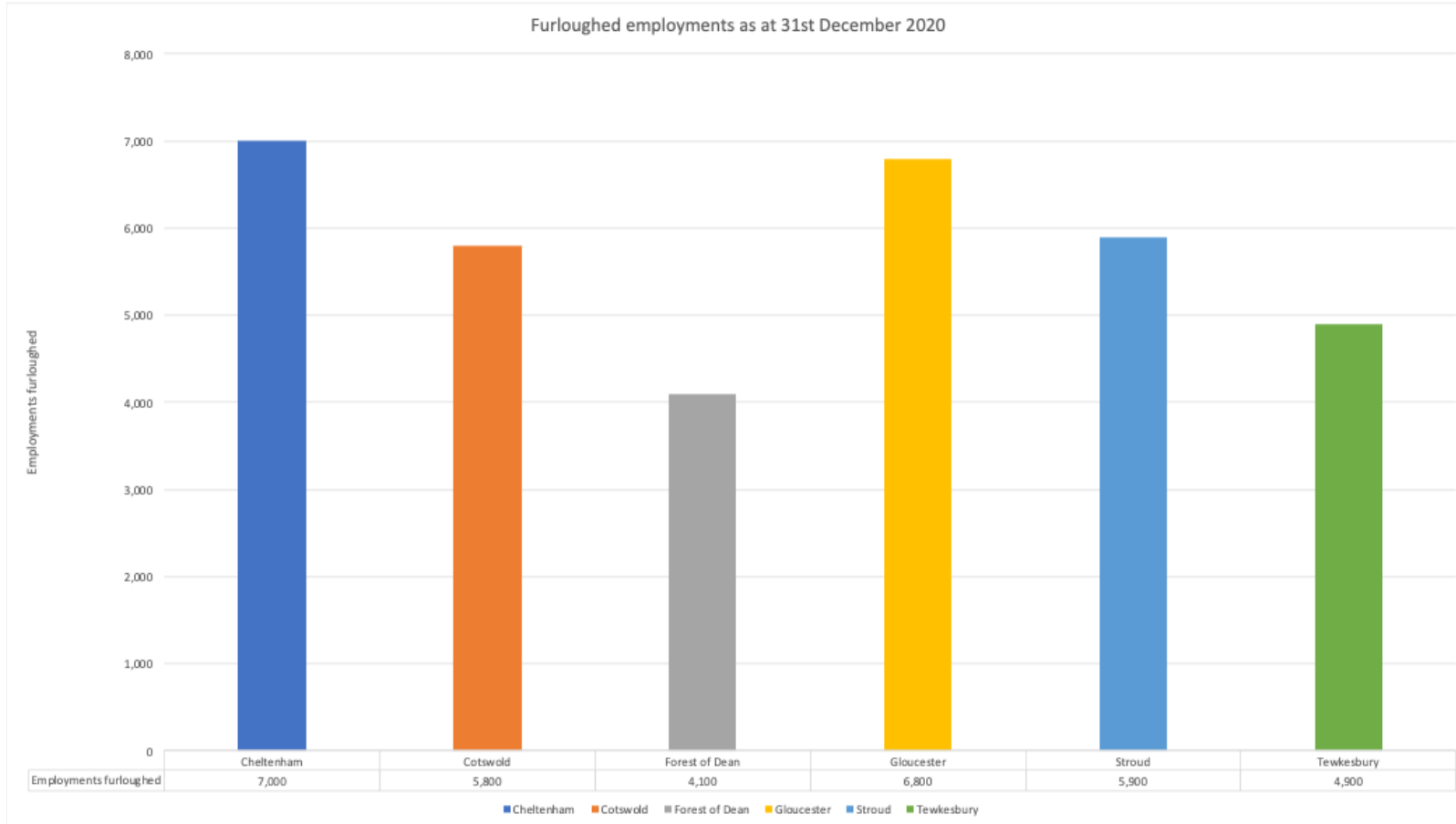


Chart 5: Furloughed employments as at 31st December 2020



Furloughed workers



- Table 2 below compares the latest furlough statistics for Gloucestershire against England and the South West

Furloughed employments as at the 31 st December 2020			
Area	Employments furloughed	Eligible employments	*Take-up-rate
Gloucestershire	34,400	288,000	12%
South West	298,000	2,488,400	12%
England	3,186,200	25,097,500	13%

**Take up rate is the percentage of workers furloughed, as a proportion of those eligible employments.*

Table 2: Furloughed statistics for Gloucestershire compared with England and South West as at 31st December 2020



Furloughed workers

- Table 3 below shows the provisional figures for January 2021 furlough statistics for Gloucestershire districts against England and the South West

Furloughed employments as at 31 st January 2021 (provisional)			
District	Employments furloughed	Eligible employments	Take-up
Cheltenham	8,800	53,100	17%
Cotswold	7,200	38,700	19%
Forest of Dean	5,100	35,300	15%
Gloucester	8,900	64,700	14%
Stroud	7,800	53,700	15%
Tewkesbury	6,200	42,600	15%
Gloucestershire	44,100	288,000	15%
South West	386,800	2,488,400	16%
England	3,769,700	25,097,500	15%

Table 3: Provisional furloughed statistics for Gloucestershire districts compared with England and South West as at 31st January 2021

2020 Overview

- The following section contains selected data that gives an overview of employment in Gloucestershire in 2020 and projections for the future
- The data should be used as a guide to the health of the respective sectors in light of the Covid-19 pandemic and its effects during 2020
- This data is supplementary to the indicators of local economic health and employment supplied elsewhere in this bulletin

2020 Overview

- Chart 6 below illustrates the amount of people in employment in Gloucestershire during 2020. It also illustrates the change year on year, and the average earnings for people in the county in 2020



Chart 6: People in employment in Gloucestershire 2020

Source: EMSI

2020 Overview

Chart 7 illustrates the growth trend in Gloucestershire employment up to the Covid-19 outbreak in 2020 and projected trend beyond

Regional Trends

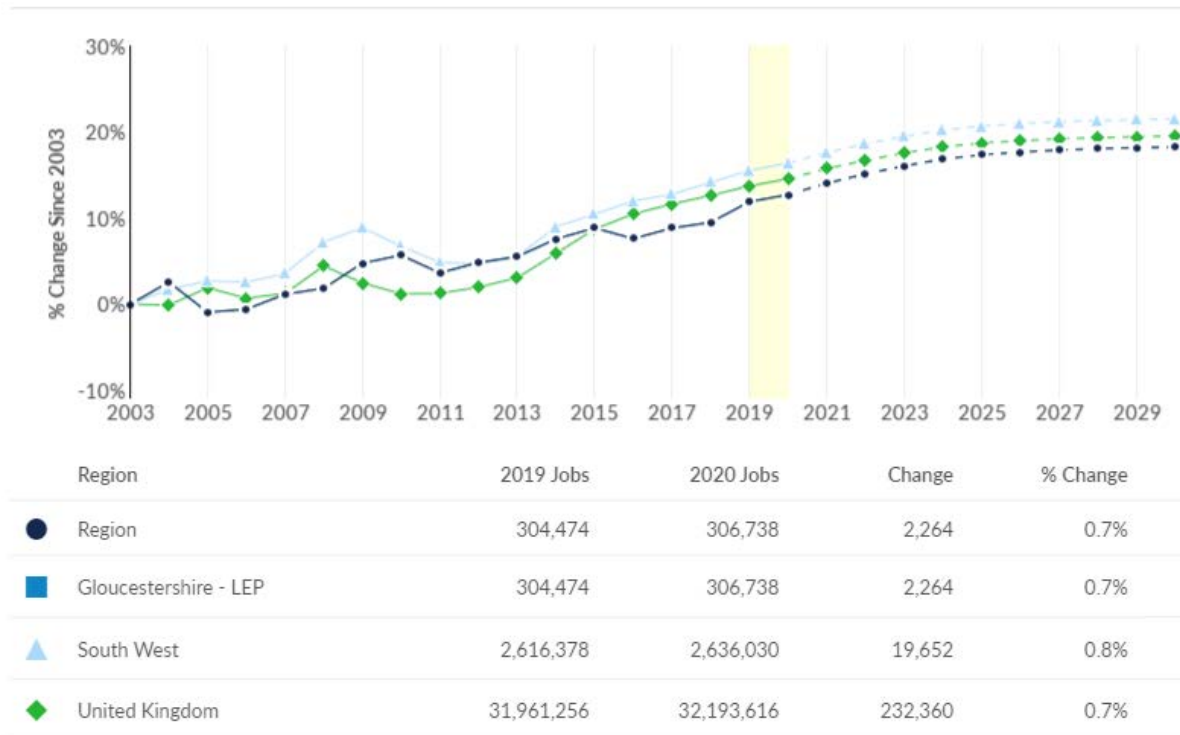


Chart 7: Employment growth trend in Gloucestershire 2020

Source: EMSI

2020 Overview

Largest Industries

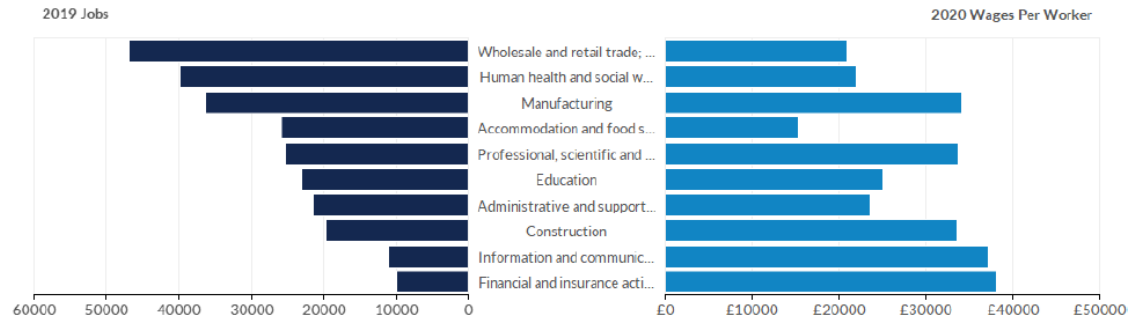


Chart 8 illustrates the largest industries in the county in terms of numbers employed, and contrasts it with the wages per worker in these sectors in terms of annual salaries

Chart 8: Largest industries in Gloucestershire 2020

Source: EMSI

2020 Overview

Occupations Employed by these Industries

Description	Employed in Industry Group (2020)	% of Total Jobs in Industry Group (2020)
Sales and Retail Assistants	12,163	4.0%
Other Administrative Occupations n.e.c.	7,913	2.6%
Care Workers and Home Carers	7,789	2.5%
Kitchen and Catering Assistants	7,275	2.4%
Nurses	6,773	2.2%

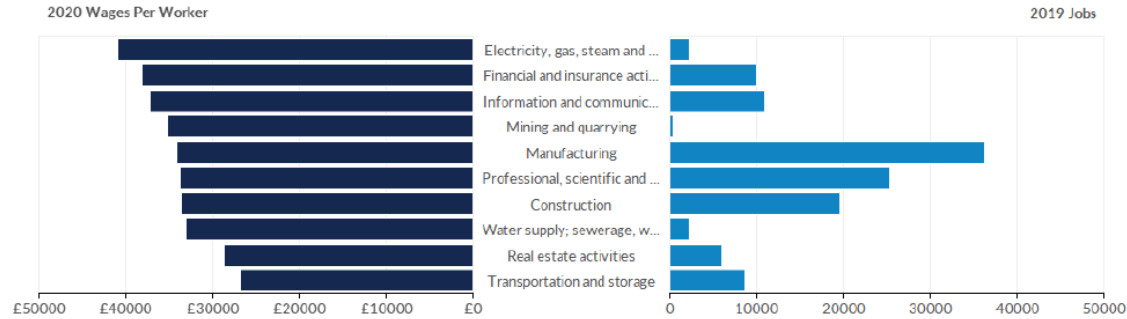
Chart 8 shows the largest specific occupations in Gloucestershire 2020 and demonstrates the importance of the service sector to local employment

Chart 8: Largest areas of specific occupations in Gloucestershire 2020

Source: EMSI

2020 Overview

Highest Paying Industries



Industry	2019 Jobs	2020 Jobs	Change in Jobs (2019-2020)	% Change	2020 Wages Per Worker
Electricity, gas, steam and air conditioning supply	2,298	2,218	-80	-3%	£40,976
Financial and insurance activities	9,933	9,946	13	0%	£38,207
Information and communication	10,957	10,910	-47	0%	£37,106
Mining and quarrying	344	342	-2	-1%	£35,240
Manufacturing	36,301	36,439	138	0%	£34,128
Professional, scientific and technical activities	25,296	25,657	361	1%	£33,702
Construction	19,689	20,143	454	2%	£33,617
Water supply; sewerage, waste management and remediation activities	2,214	2,291	77	3%	£33,092
Real estate activities	6,036	6,143	107	2%	£28,742
Transportation and storage	8,732	8,789	57	1%	£26,797

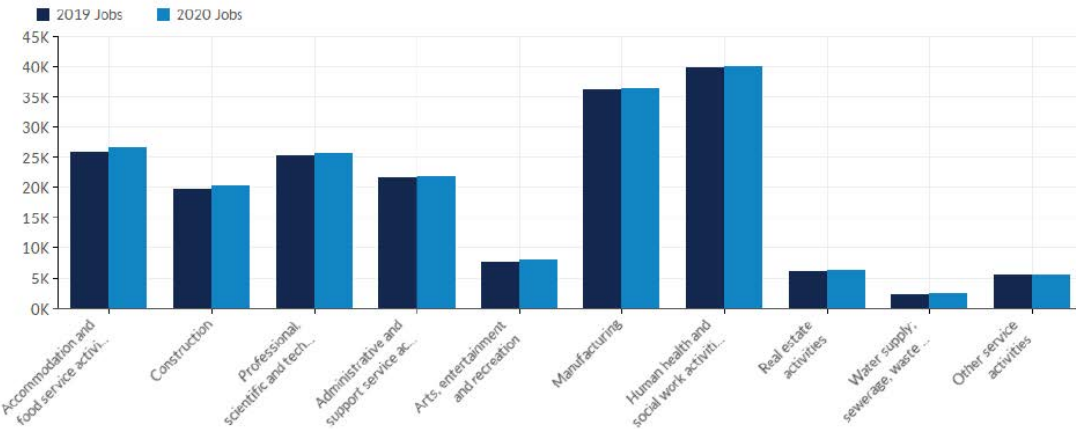
Chart 9 illustrates the highest paying industries in the county by worker wages and the amount of people employed in these sectors

Chart 9: Highest paying industries in Gloucestershire 2020

Source: EMSI

2020 Overview

Fastest Growing Industries



Industry	2019 Jobs	2020 Jobs	Change in Jobs (2019-2020)	% Change	2020 Wages Per Worker
Accommodation and food service activities	25,876	26,683	807	3%	£15,318
Construction	19,689	20,143	454	2%	£33,617
Professional, scientific and technical activities	25,296	25,657	361	1%	£33,702
Administrative and support service activities	21,516	21,864	348	2%	£23,570
Arts, entertainment and recreation	7,559	7,759	200	3%	£17,375
Manufacturing	36,301	36,439	138	0%	£34,128
Human health and social work activities	39,949	40,083	134	0%	£22,003
Real estate activities	6,036	6,143	107	2%	£28,742
Water supply; sewerage, waste management and remediation activities	2,214	2,291	77	3%	£33,092
Other service activities	5,457	5,522	65	1%	£18,299

Chart 10 illustrates the growth sectors in the county, and of interest is the growth of lower paid work in retailing, hospitality, and sections of the support services and waste management and remediation activities such as cleaning, security guards, street cleaning, large vehicle driving and waste disposal including water and sewage

Chart 10: Fastest growing industries in Gloucestershire 2020

Source: EMSI

EMSI Gloucestershire Labour Market Outlook 2021

To view an up to date projection of Labour Market for Gloucestershire supplied by EMSI visit:

- <https://drive.google.com/file/d/1YcXQTjUjIjrnarThOxf9jcP9UrSZTqDw/view?usp=sharing>

Please note that the Careers Coach tool which can be found at the Gloucestershire Skills Portal also features up to date EMSI LMI and job postings for Gloucestershire to find out more visit:

<https://www.skillsportalglos.com/career-coach/>



<https://www.gloscareershub.com/>