

October LMI update featuring Employment and jobs report for August 2021



<https://www.gloscareershub.com/>

Contents

Employment and Jobs report

- EMSI Jobs postings
- Types of jobs posted
- Top companies posting and skills required
- Claimant count
- Furloughed workers

Slides 5-8

Slides 9-10

Slide 11

Slides 12-15

Slides 16 – 22

Gloucestershire in data October 2021

- Gloucestershire in data October 2021

Slides 23 - 38

EMSI/Burning Glass LMI via Careers Coach

Please note that the Careers Coach tool which can be found at the Gloucestershire Skills Portal also utilises up to date EMSI/Burning Glass LMI and job postings for Gloucestershire to support you when working with students to explore individual career types. To find out more visit:

<https://www.skillsportalglos.com/career-coach/>

To download an information sheet visit:

<https://drive.google.com/file/d/1JXDSDszS9tZseymiooWMzVjzzlCwThbw/view>

To book a demonstration of Careers Coach e-mail: education@gfirstlep.com

The screenshot shows the homepage of the Career Coach for Gloucestershire. At the top left is the gfirst LEP logo with the tagline 'growing gloucestershire'. To the right are navigation links for 'Search', 'Login', and a 'Sign Up' button. Below the logo is a horizontal menu with 'Assessment', 'Careers', and 'CV Builder' options. The main heading reads 'Welcome to Career Coach for Gloucestershire' with a sub-heading 'With live Gloucestershire and national labour market information brought to you by Emsi'. Two main content boxes are visible: 'Take Career Assessment' and 'Browse Careers'. The 'Take Career Assessment' box contains the text 'Take a Career Assessment to learn about yourself and Career Coach will give you career suggestions based on your interests.' and a green button labeled 'Take the Assessment'. The 'Browse Careers' box contains the text 'Browse or search for careers and we will give you relevant data on wages, employment, and the training you need.' and a search input field with a green button.



Headlines from August 2021 figures



- The Claimant Count in Gloucestershire decreased by 295 persons to 13,560 and the rate decreased to 3.5%
- Job posting numbers for the month of August were around 36,635 which is an increase of around 354 job postings when compared to July
- Provisional data shows total number of workers furloughed in Gloucestershire as at the 31st August was 10,500 which is down from the July figure of 12,600
- To date Gloucestershire has seen a cumulative total of 113,300 employments supported by the Coronavirus Job Retention Scheme at various times



EMSI job posting numbers



- Job posting numbers for the month of August 2021 were around 36,635 which is an increase of around 354 job postings when compared to July 2021.
- Chart 1 below gives a district overview of total jobs for the month of August, comparing the same month in 2019, 2020 and 2021.
- The number of jobs posted in August 2021 exceeds the same month for previous years, with the exception of Gloucester which is seeing slightly fewer when compared to 2019.



EMSI job posting numbers

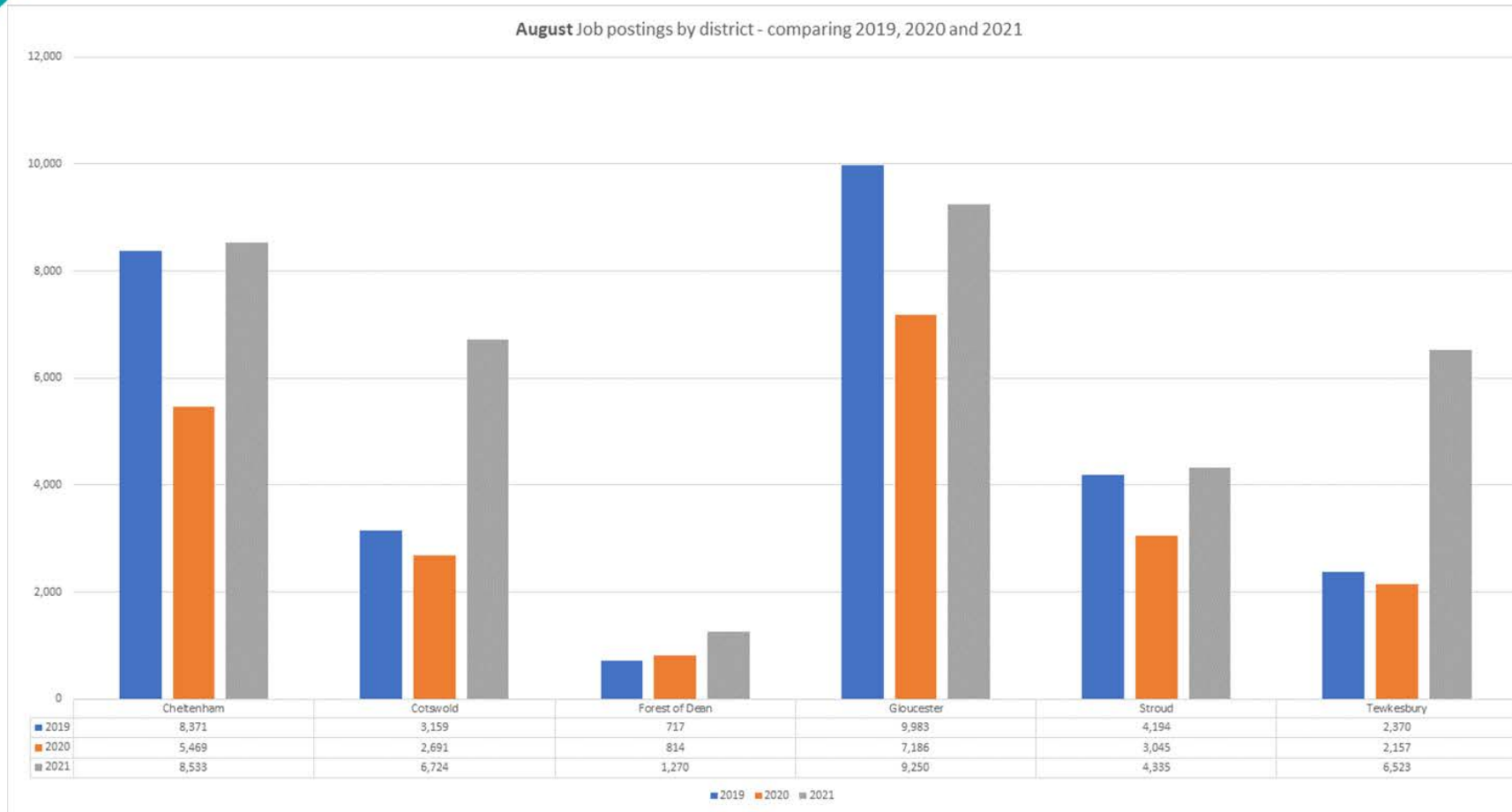


Chart I: District overview of total jobs in August 2021 when compared with August 2020 and August 2019



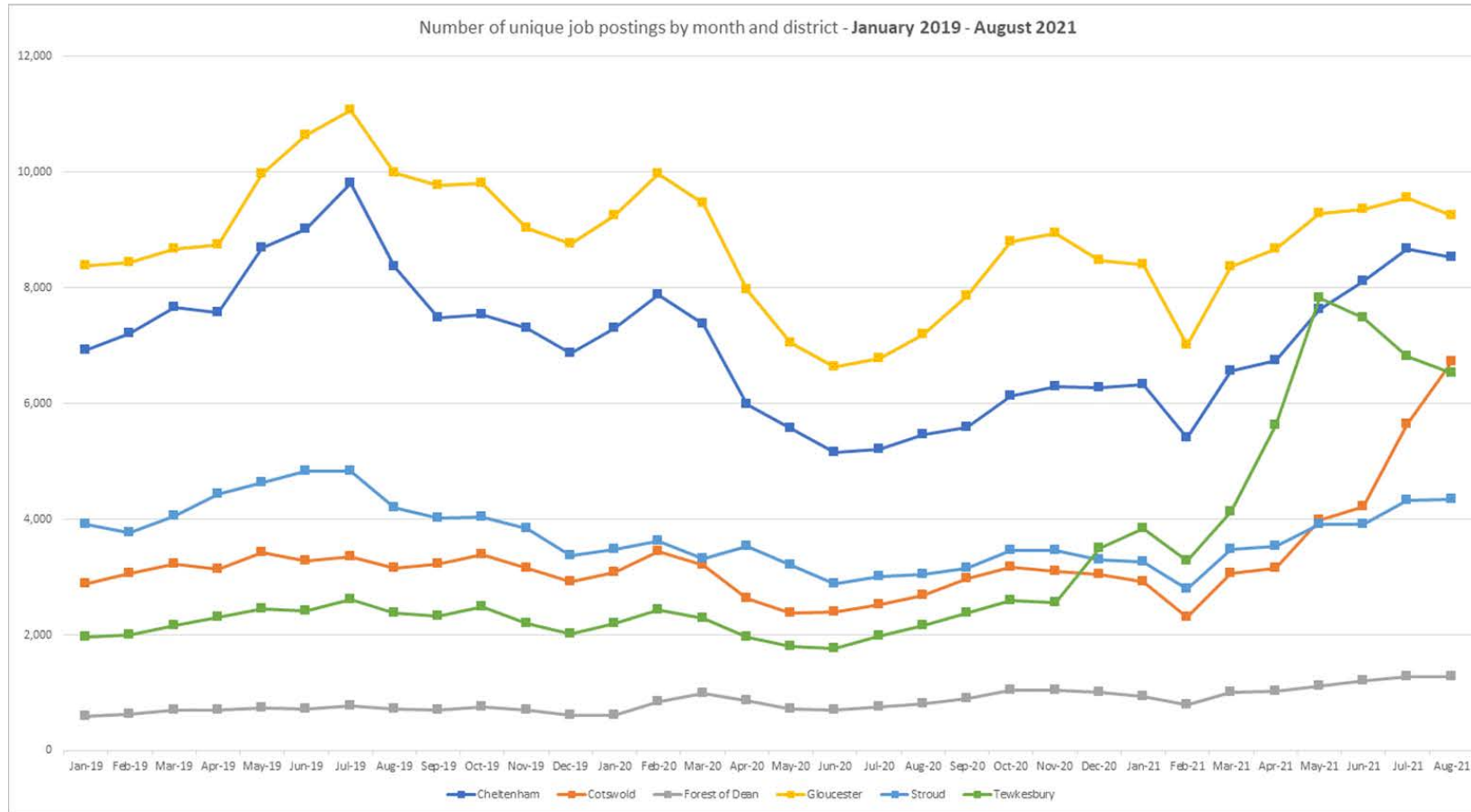
EMSI job posting numbers



- Chart 2 below shows total jobs by district from January 2019 to August 2021, with most districts displaying a similar trend over the past few months.
- However, Tewkesbury job posting numbers have dropped back slightly again for the for the third consecutive month and Cotswold is seeing a steep increase.



EMSI job posting numbers



Please note – job posting numbers are based on snapshot data taken on the 21st September numbers are provisional and subject to change. The information is continually being cleaned and validated, but job posting numbers provide a good indication on how the job market is performing.

EMSI delivers real time access to job vacancies from a comprehensive range of sources including job boards, employer sites, newspapers, public agencies etc. Data extraction and analysis technologies mine and code data from each job listing to provide analysis on industries, occupations, skills and qualifications. However, the tool will inevitably not capture all vacancies.

Source: EMSI

Chart 2: Number of job postings by district for the past 12 months



Types of jobs posted



- Chart 3 below shows the net change in the number of job postings by top level occupation (two-digit SOC), comparing July to August 2021.
- A number of occupations have seen a decrease in August when compared to July, with some large increases seen in Business, Media and Public Service Professionals (209) and Business and Public Service Associate Professionals (304).



Types of jobs posted

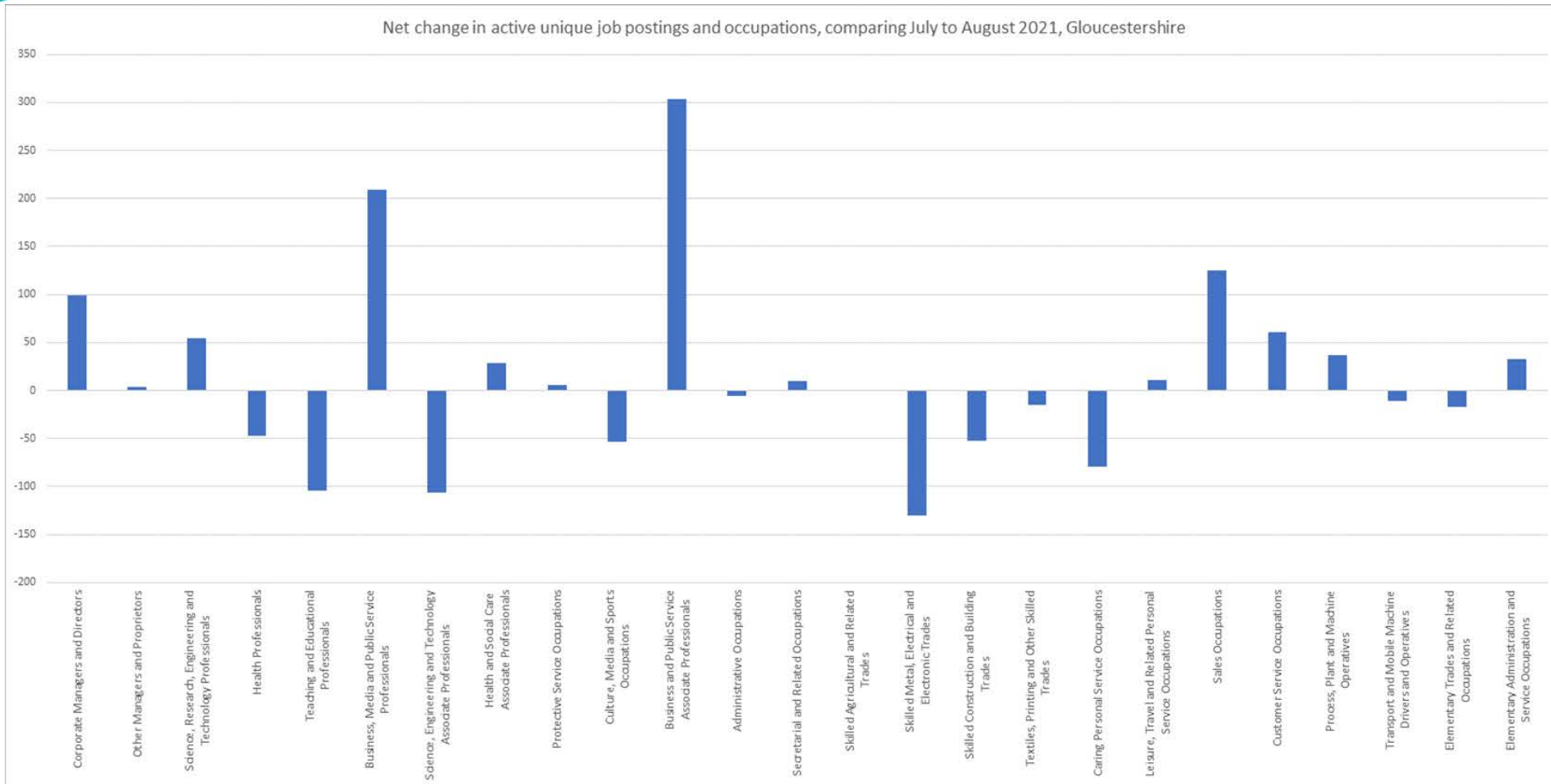


Chart 3: Net change in the number of job postings by two-digit (SOC) code, comparing August 2020 and August 2021.



Top companies posting and skills required (August 2021)



- **The top companies posting jobs in August include**; NHS, Gloucestershire Hospitals NHS Foundation Trust, and Amazon.com Services LLC – please note that we have not included employment agencies in top companies posting, employment agencies do however form part of the total jobs posted in the report.
- **Top posted occupations in August**: Programmers and software development professionals, Nurses, Care workers and home carers, and Sales accounts and business development managers and Chefs.
- **Top posted job titles** include; Support Workers, Care Assistants, Warehouse Operatives, Registered Nurses, and Production Operatives.
- **Top hard skills** listed in job postings include; Finance, Nursing, Auditing, Warehousing and Agile Methodology.
- **Top common skills** listed include; Communications, Management, Customer Service, Sales and Enthusiasm.



August Claimant Count



- September saw the publication of the August *Claimant Count figures: Gloucestershire has seen a decrease to 3.5% (the value is expressed as a proportion of residents aged 16-64). The August total now stands at 13,560 compared to the July figure of 13,885 which is a monthly decrease of 295 persons. All districts saw a decrease in the estimated number of unemployed claimants.
- The August figure for the South West was 3.8%, England was 5.3% and the UK figure was 5.2%.
- Chart 4 shows the claimant rate for August 2021 in Gloucestershire



August Claimant Count

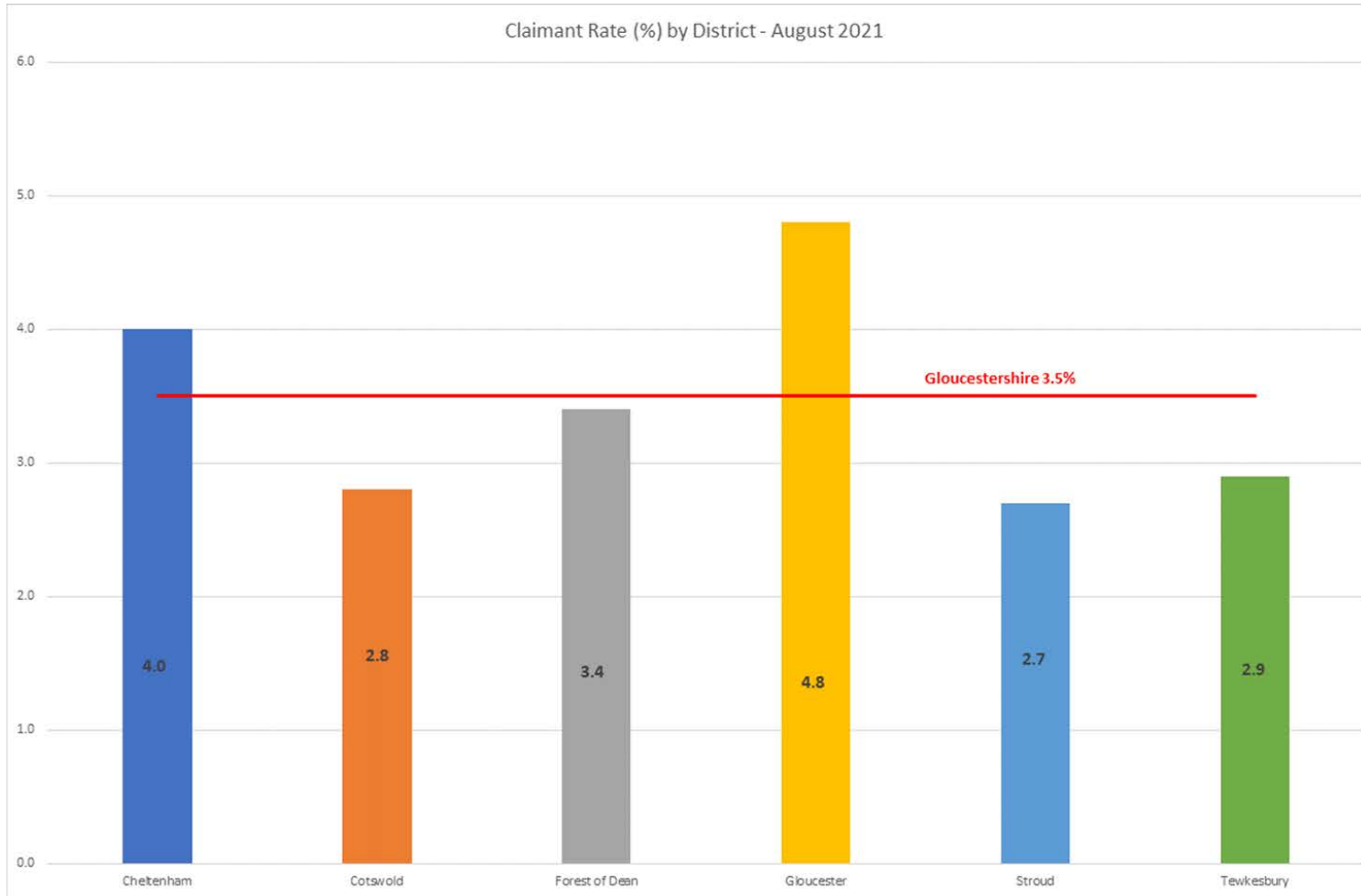


Chart 4: Claimant rate for August 2021 in Gloucestershire



August Claimant Count



- Chart 5 shows the current claimant rate for Gloucestershire at 3.5%, when compared with all six districts, the South West and United Kingdom.
- The rate for Gloucestershire continues to be below that of the UK and South West.



August Claimant Count

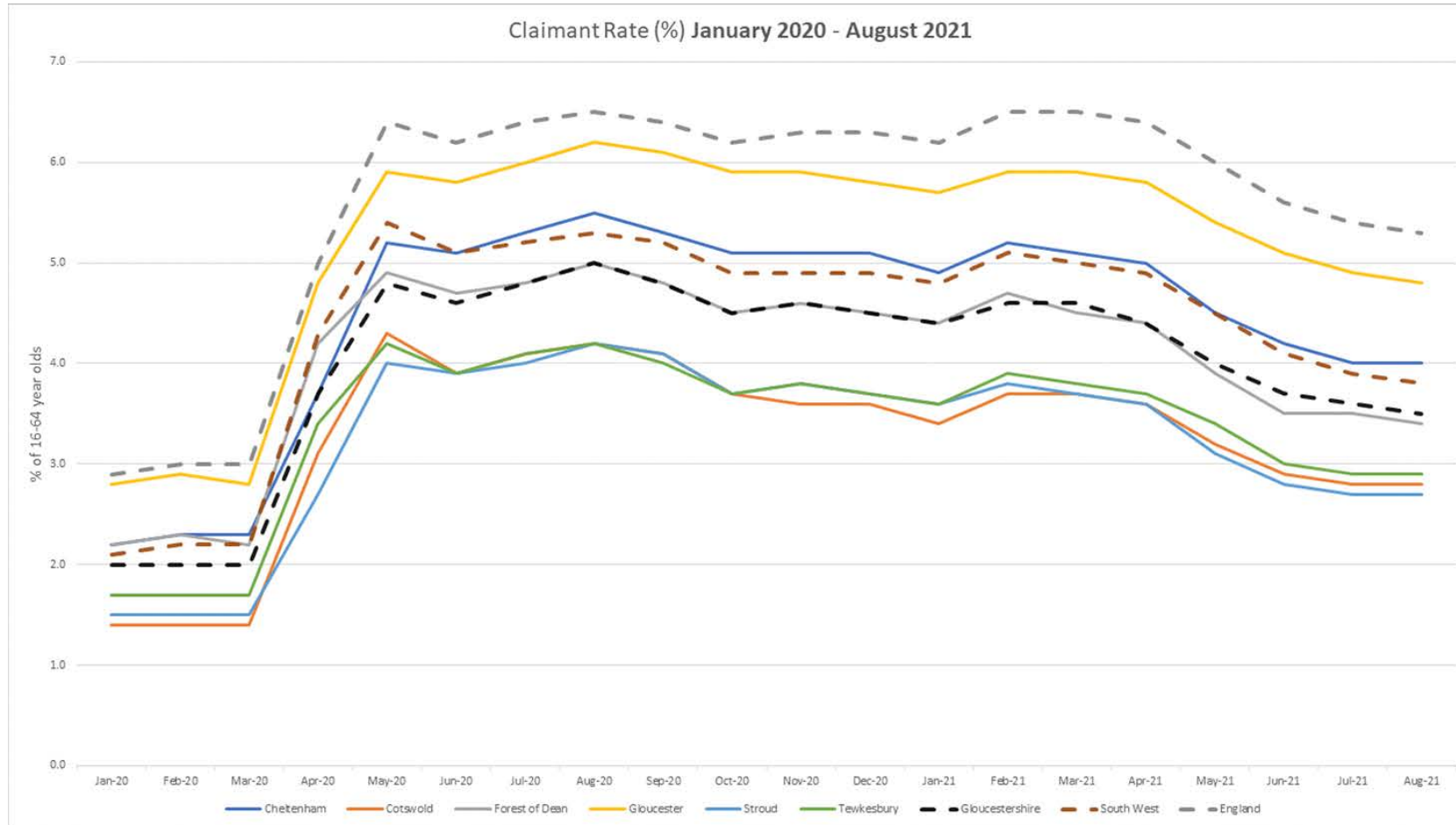


Chart 5: Claimant rate for August 2021 in Gloucestershire compared with South West and UK



Furloughed workers



- Provisional data shows total number of workers furloughed in Gloucestershire as at the 31st August was 10,500 which is down from the July figure of 12,600.
- Also updated this month were the cumulative number of jobs furloughed since the start of the scheme in March 2020, which has now seen a cumulative total of 113,300 Gloucestershire employments supported by the CJRS at various times.
- Chart 5 below shows the district breakdown of workers furloughed at the end of August



Furloughed workers

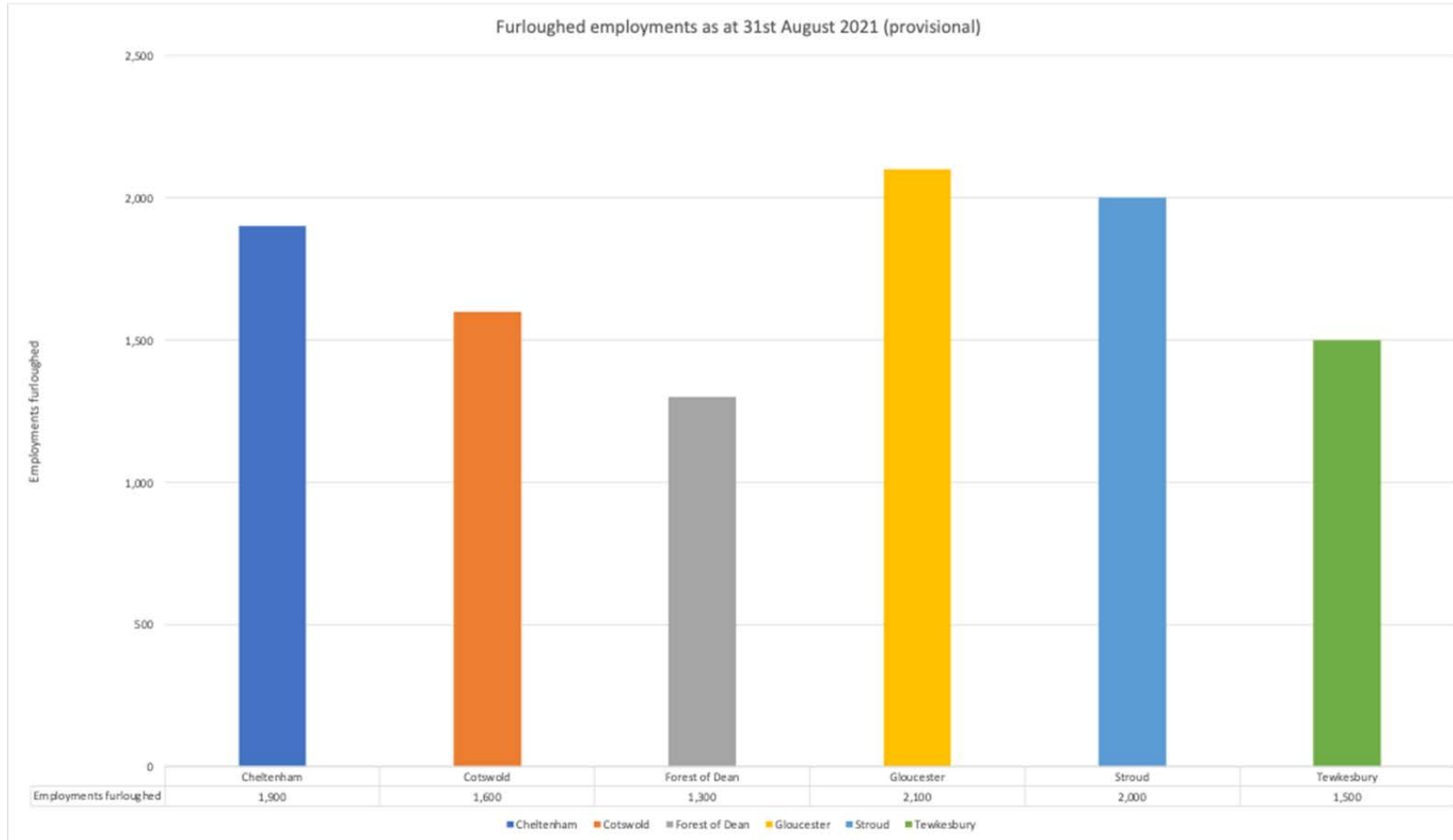


Chart 5: Furloughed employments as at 31st August 2021



Furloughed workers

- Table 2 below compares the August furlough statistics for Gloucestershire against England and the South West

Furloughed employments as at the 31 st August 2021 (provisional)			
Area	Employments furloughed	Eligible employments	*Take-up-rate
Gloucestershire	10,500	275,700	4%
South West	87,000	2,369,400	4%
England	1,118,700	23,881,800	5%

**Take up rate is the percentage of workers furloughed, as a proportion of those eligible employments.*

Table 2: Furloughed statistics for Gloucestershire compared with England and South West as at 31st August 2021



Furloughed workers

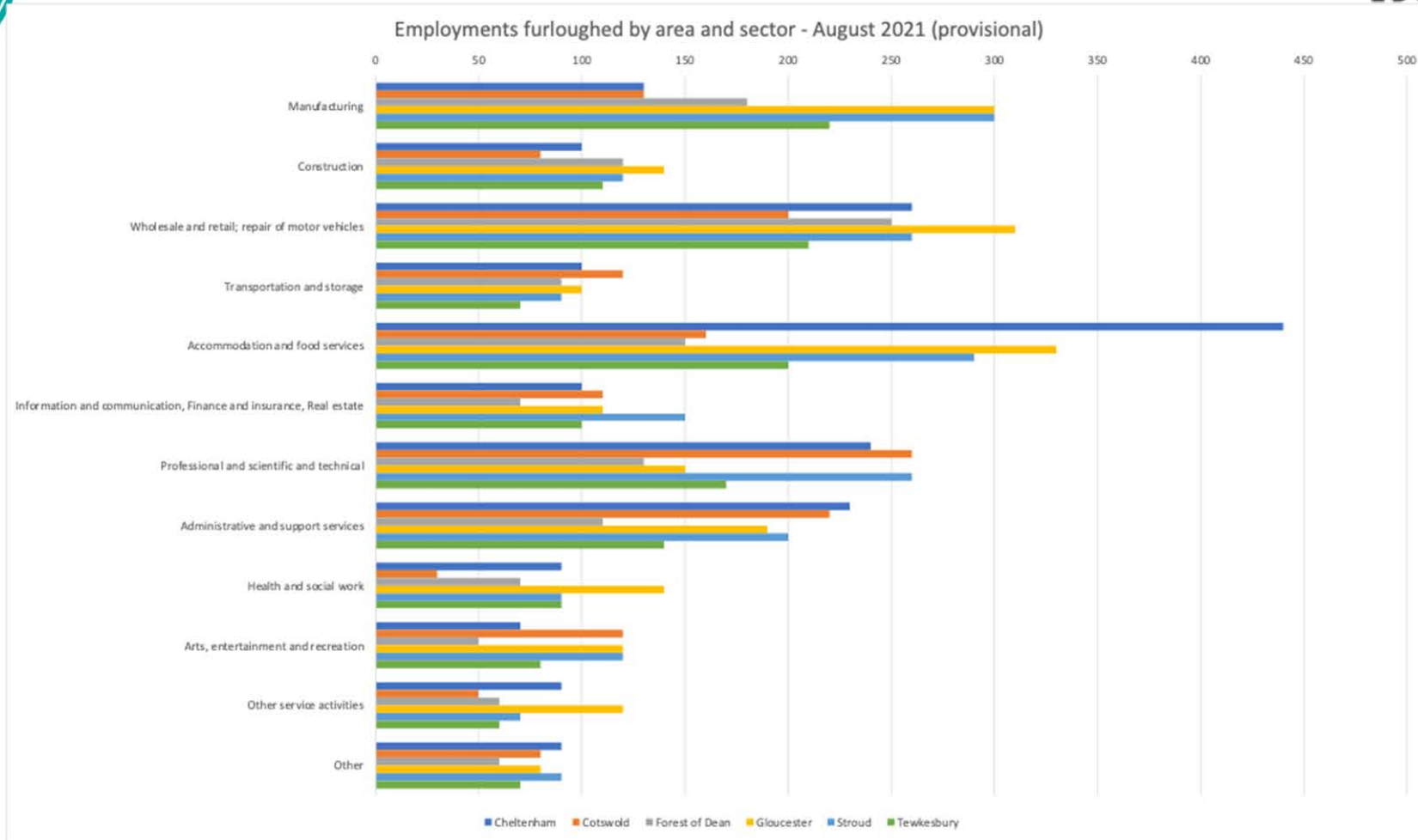


Chart 6 displays the number of furloughed workers by broad sector and by area as at the end of August 2021. The accommodation and food services sector continues to see some of the largest numbers of furloughed employments but has seen an overall decrease of 650 compared to July figures.

Chart 6: Furloughed workers in Gloucestershire



Furloughed workers

Employments furloughed by LA and sector - August 2021 (provisional)	Cheltenham	Cotswold	Forest of Dean	Gloucester	Stroud	Tewkesbury	Gloucestershire
Manufacturing	130	130	180	300	300	220	1260
Construction	100	80	120	140	120	110	660
Wholesale and retail; repair of motor vehicles	260	200	250	310	260	210	1510
Transportation and storage	100	120	90	100	90	70	570
Accommodation and food services	440	160	150	330	290	200	1570
Information and communication, Finance and insurance, Real estate	100	110	70	110	150	100	640
Professional and scientific and technical	240	260	130	150	260	170	1210
Administrative and support services	230	220	110	190	200	140	1090
Health and social work	90	30	70	140	90	90	500
Arts, entertainment and recreation	70	120	50	120	120	80	550
Other service activities	90	50	60	120	70	60	450
Other	90	80	60	80	90	70	480

Table 3 shows the number of furloughed workers by broad sector and by district at the end of August 2021

Table 3: Furloughed workers in Gloucestershire



Furloughed workers



- Chart 7 Below compares the number of furloughed workers by sector and district, looking at the net change in furloughed workers in August compared to July.
- There continues to be a decrease in the number of furloughed employments across the majority of sectors, with the accommodation and food services and wholesale and retail; repair of motor vehicles sectors again both seeing the largest decrease
- There has been a small increase (10) in the Forest of Dean in the Health and social work sector.



Furloughed workers

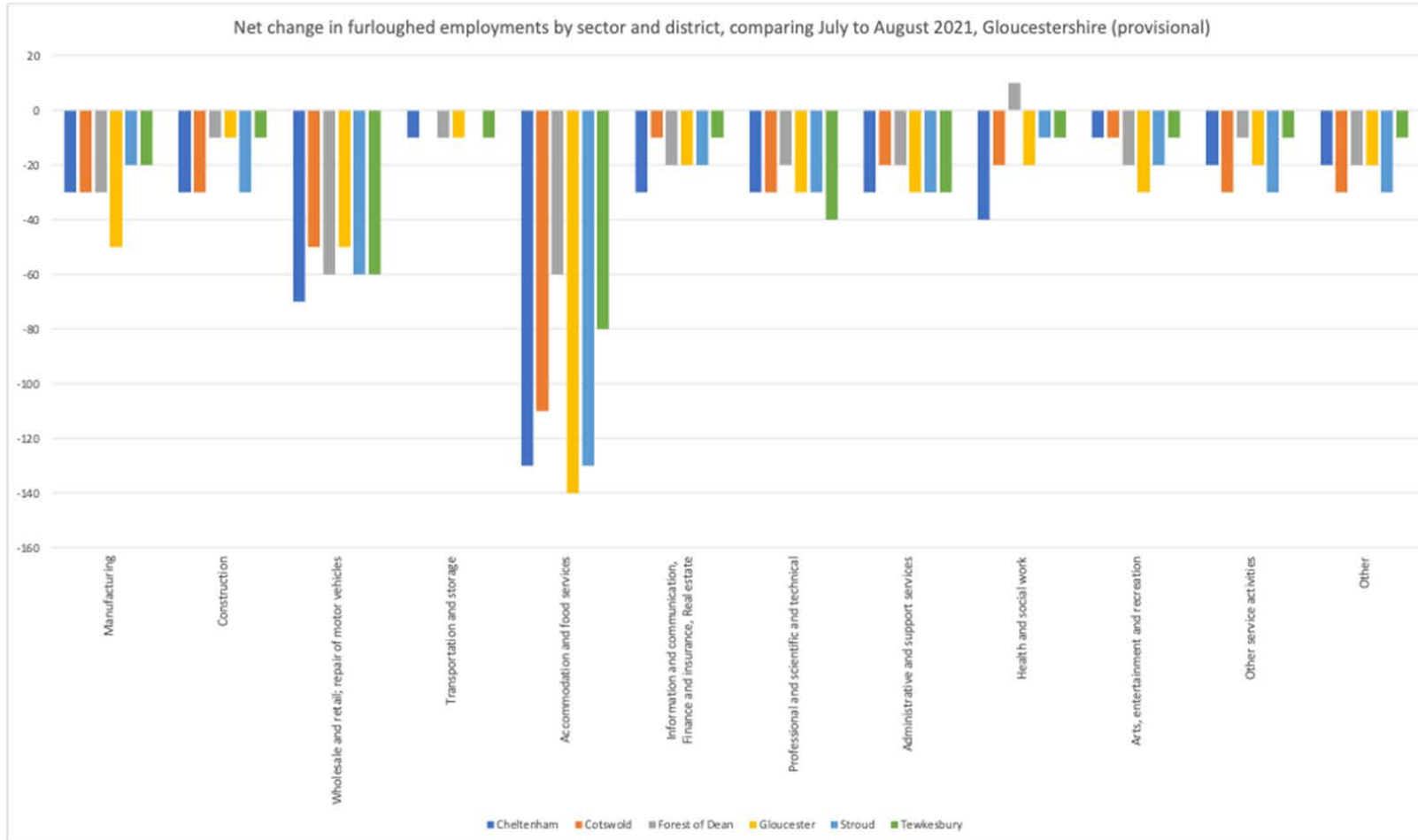


Chart 7 compares the number of furloughed workers by sector and district by looking at the net change in furloughed workers in August compared to July

Chart 7: Furloughed workers by district

Gloucestershire in data October 2021



<https://www.gloscareershub.com/>

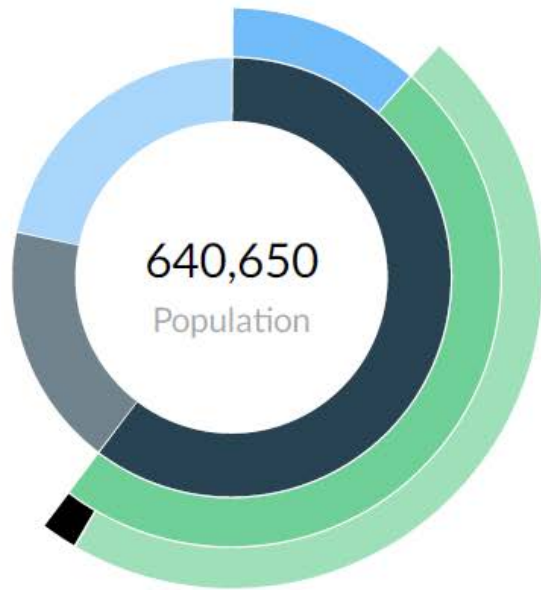
October 2021

The following data gives a snapshot of employment trends and key labour market statistics in Gloucestershire at October 2021

October 2021

Labour force in Gloucestershire

2020 Labour Force Breakdown



	Population
● Total Working Age Population (16-64)	386,043
● Not in Labour Force	73,844
● Labour Force	312,199
● Employed	299,789
● Unemployed	12,410
● Under 16	115,187
● Over 64	139,420

October 2021

Source: EMSI/Burning Glass

Age profile of Gloucestershire

2020 Age Cohort Demographics



Age Cohort	2020 Population	2020 Percent	
● Under 16 years	115,187	18.0%	■
● 16 to 34 years	132,768	20.7%	■
● 35 to 54 years	165,700	25.9%	■
● 55 to 74 years	161,898	25.3%	■
● 75 years and over	65,097	10.2%	■

October 2021

Source: EMSI/Burning Glass

How qualified is Gloucestershire?

Concerning educational attainment, 33.5% of the selected regions' residents possess a Degree or Equivalent and Above - SCQF L9 (1.2% above the national average), and 8.9% hold a Higher Education Below Degree Level - SCQF L7-8 (0.6% above the national average).



	% of Population	Population
● No Qualifications (NVQ)	5.2%	19,953
● Other Qualifications (NVQ)	5.2%	19,954
● NVQ 1 - SCQF L4	10.8%	41,630
● NVQ 2 - SCQF L5	15.7%	60,797
● Trade Apprenticeships	2.8%	10,686
● NVQ 3 - SCQF L6	18.0%	69,626
● Higher Education Below Degree Level - SCQF L7-8	8.9%	34,253
● Degree or Equivalent and Above - SCQF L9	33.5%	129,143

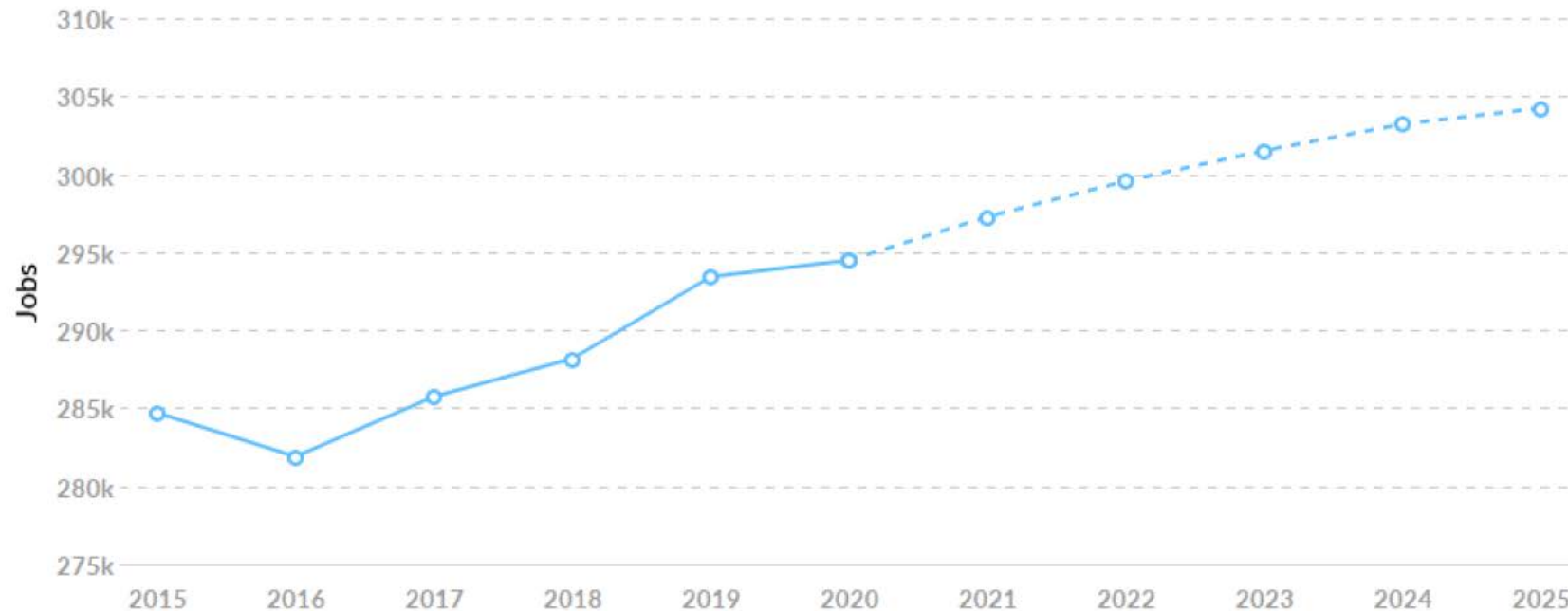
October 2021

Source: EMSI/Burning Glass

Growth in jobs in Gloucestershire

Job Trends

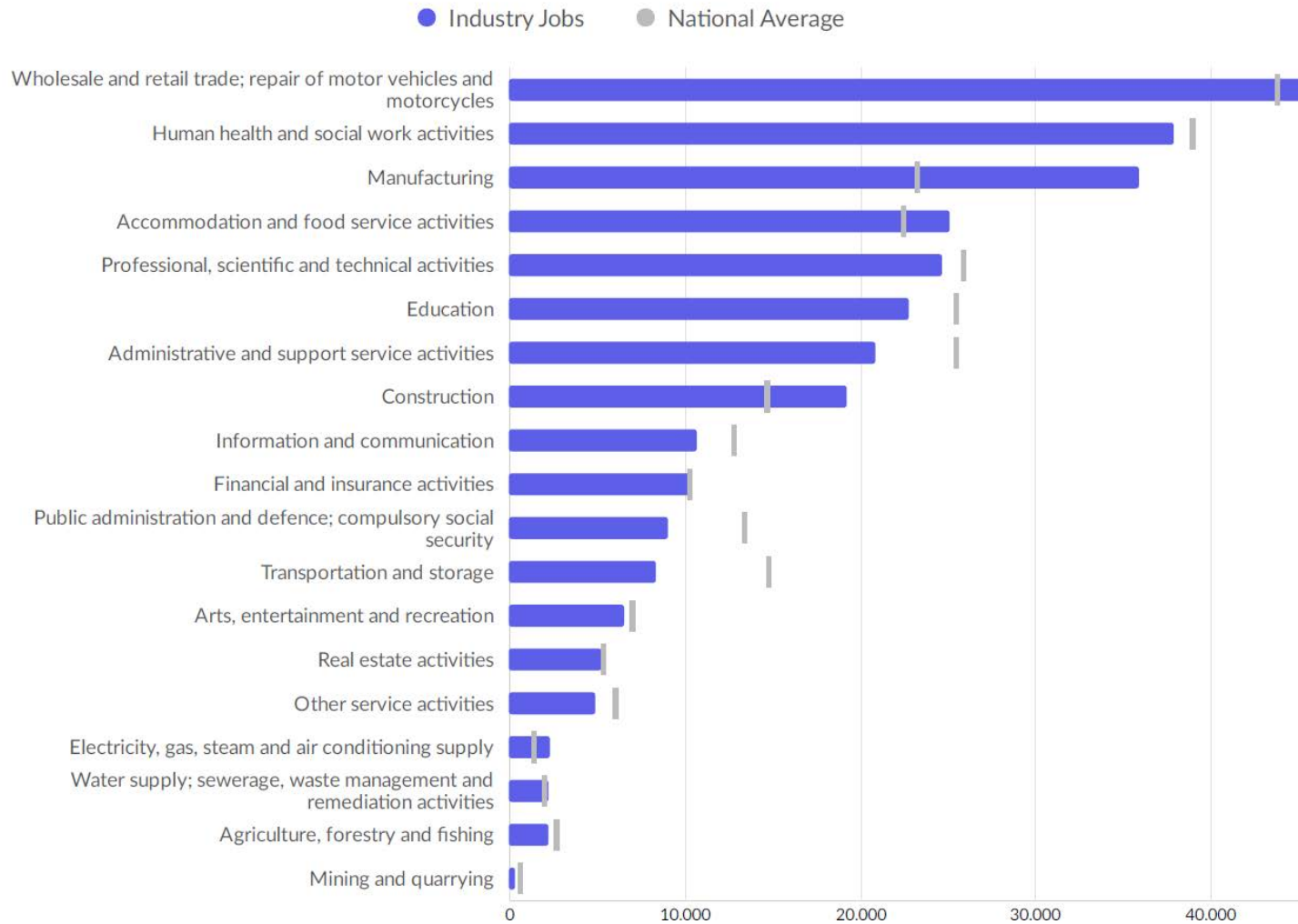
From 2015 to 2020, jobs increased by 3.4% in 6 South West Local Authorities from 284,692 to 294,472. This change fell short of the national growth rate of 5.0% by 1.6%.



October 2021

Source: EMSI/Burning Glass

Largest Industries in Gloucestershire



October 2021

Source: EMSI/Burning Glass

Largest Industries vs wages in Gloucestershire

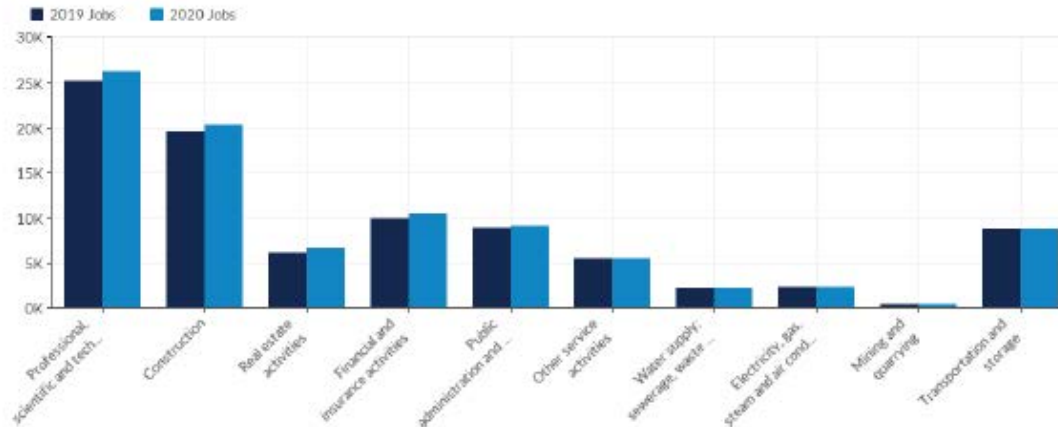


Industry	2019 Jobs	2020 Jobs	Change in Jobs (2019-2020)	% Change	2020 Wages Per Worker
Wholesale and retail trade; repair of motor vehicles and motorcycles	46,848	46,775	-73	0%	£20,952
Human health and social work activities	39,949	39,247	-702	-2%	£21,991
Manufacturing	36,301	36,266	-35	0%	£34,128
Accommodation and food service activities	25,876	25,836	-40	0%	£15,295
Professional, scientific and technical activities	25,296	26,057	761	3%	£33,902
Education	22,918	22,829	-89	0%	£25,028
Administrative and support service activities	21,516	21,369	-147	-1%	£23,542
Construction	19,689	20,376	687	3%	£33,608
Information and communication	10,957	10,747	-210	-2%	£37,036
Financial and insurance activities	9,933	10,442	509	5%	£38,102

October 2021

Source: EMSI/Burning Glass

Fastest growing Industries in Gloucestershire

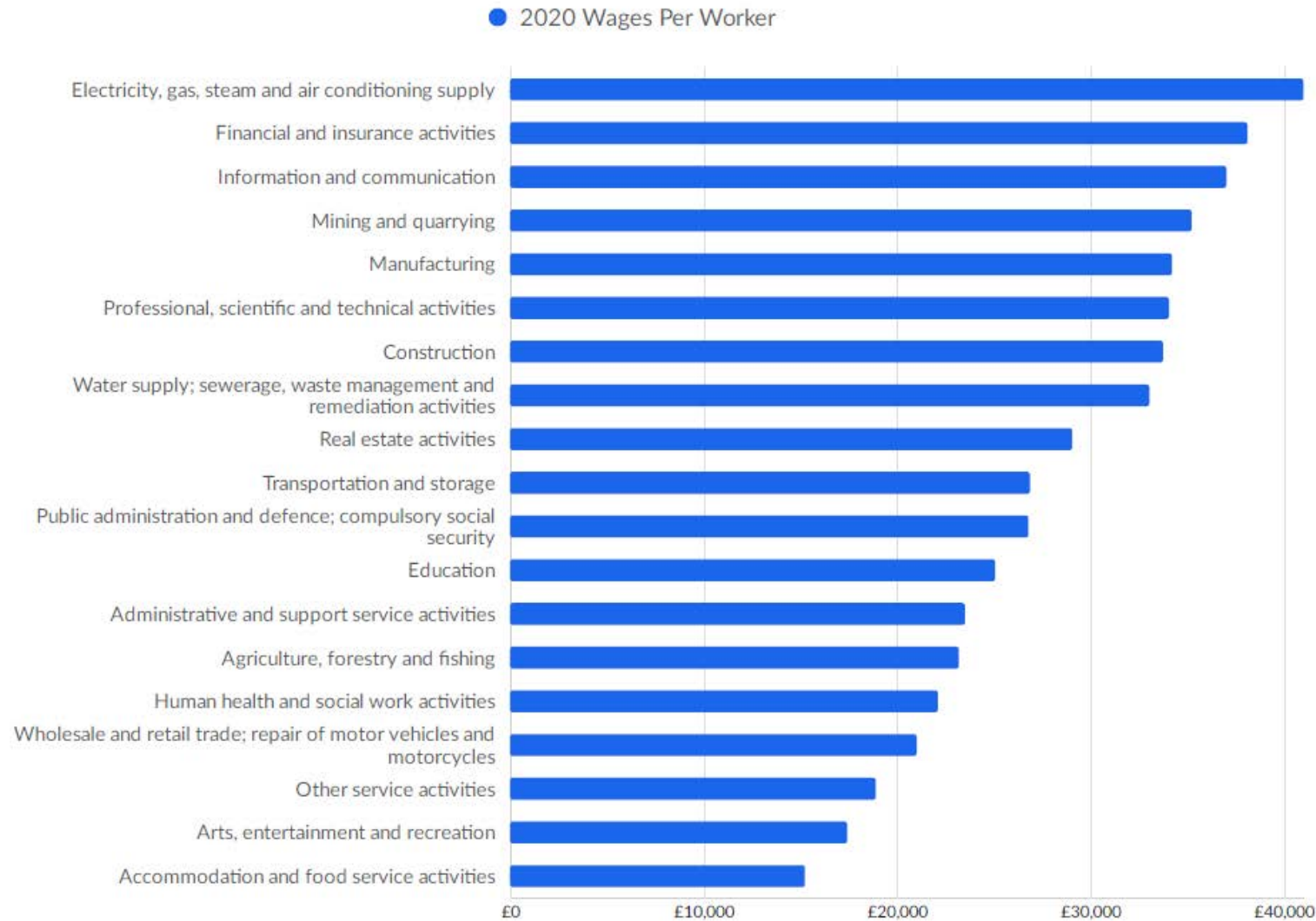


Industry	2019 Jobs	2020 Jobs	Change in Jobs (2019-2020)	% Change	2020 Wages Per Worker
Professional, scientific and technical activities	25,296	26,057	761	3%	£33,902
Construction	19,689	20,376	687	3%	£33,608
Real estate activities	6,036	6,656	620	10%	£28,779
Financial and insurance activities	9,933	10,442	509	5%	£38,102
Public administration and defence; compulsory social security	8,909	9,049	140	2%	£26,775
Other service activities	5,457	5,469	12	0%	£18,328
Water supply; sewerage, waste management and remediation activities	2,214	2,224	10	0%	£33,065
Electricity, gas, steam and air conditioning supply	2,298	2,299	1	0%	£41,007
Mining and quarrying	344	344	0	0%	£35,252
Transportation and storage	8,732	8,704	-28	0%	£26,706

October 2021

Source: EMSI/Burning Glass

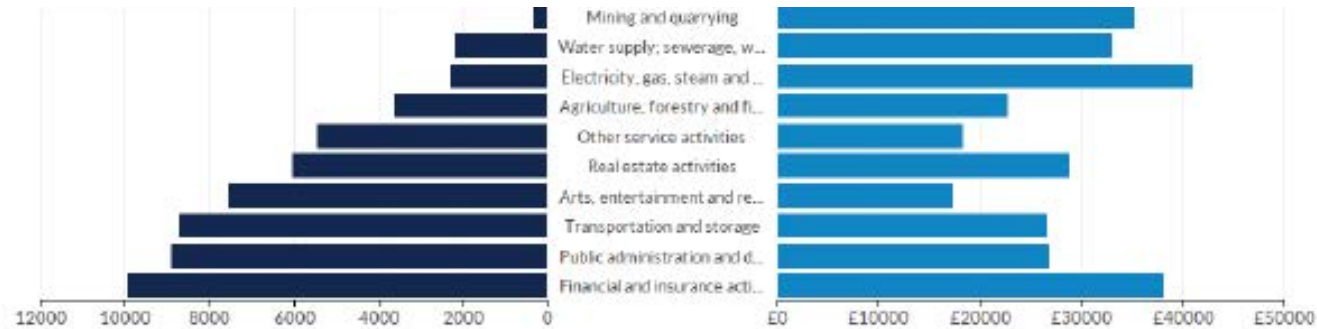
Top industry wages in Gloucestershire



October 2021

Source: EMSI/Burning Glass

Smallest Industries in Gloucestershire

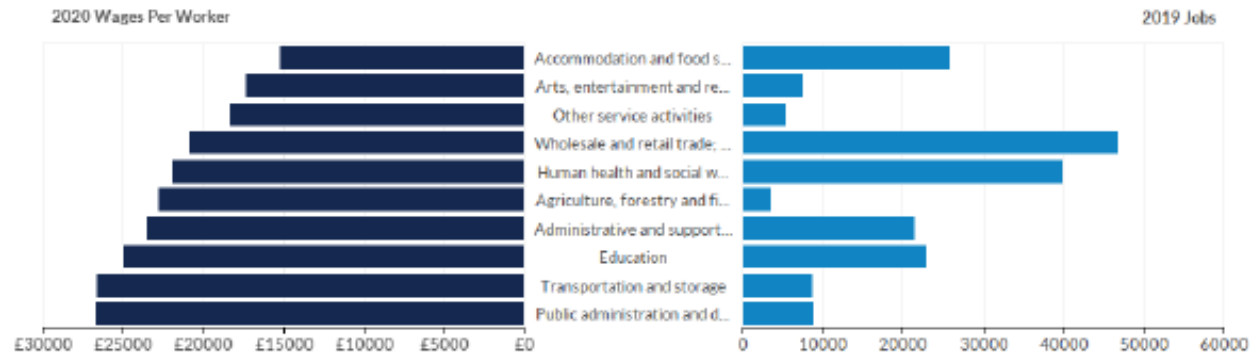


Industry	2019 Jobs	2020 Jobs	Change in Jobs (2019-2020)	% Change	2020 Wages Per Worker
Mining and quarrying	344	344	0	0%	£35,252
Water supply; sewerage, waste management and remediation activities	2,214	2,224	10	0%	£33,065
Electricity, gas, steam and air conditioning supply	2,298	2,299	1	0%	£41,007
Agriculture, forestry and fishing	3,636	3,517	-119	-3%	£22,806
Other service activities	5,457	5,469	12	0%	£18,328
Real estate activities	6,036	6,656	620	10%	£28,779
Arts, entertainment and recreation	7,559	7,187	-372	-5%	£17,412
Transportation and storage	8,732	8,704	-28	0%	£26,706
Public administration and defence; compulsory social security	8,909	9,049	140	2%	£26,775
Financial and insurance activities	9,933	10,442	509	5%	£38,102

October 2021

Source: EMSI/Burning Glass

Lowest paying Industries in Gloucestershire

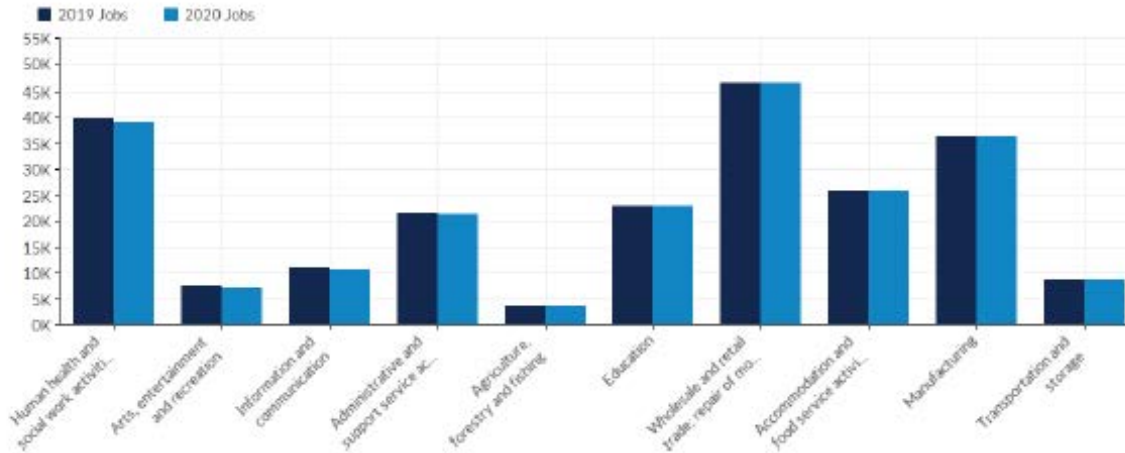


Industry	2019 Jobs	2020 Jobs	Change in Jobs (2019-2020)	% Change	2020 Wages Per Worker
Accommodation and food service activities	25,876	25,836	-40	0%	£15,295
Arts, entertainment and recreation	7,559	7,187	-372	-5%	£17,412
Other service activities	5,457	5,469	12	0%	£18,328
Wholesale and retail trade; repair of motor vehicles and motorcycles	46,848	46,775	-73	0%	£20,952
Human health and social work activities	39,949	39,247	-702	-2%	£21,991
Agriculture, forestry and fishing	3,636	3,517	-119	-3%	£22,806
Administrative and support service activities	21,516	21,369	-147	-1%	£23,542
Education	22,918	22,829	-89	0%	£25,028
Transportation and storage	8,732	8,704	-28	0%	£26,706
Public administration and defence; compulsory social security	8,909	9,049	140	2%	£26,775

October 2021

Source: EMSI/Burning Glass

Slowest growing Industries in Gloucestershire

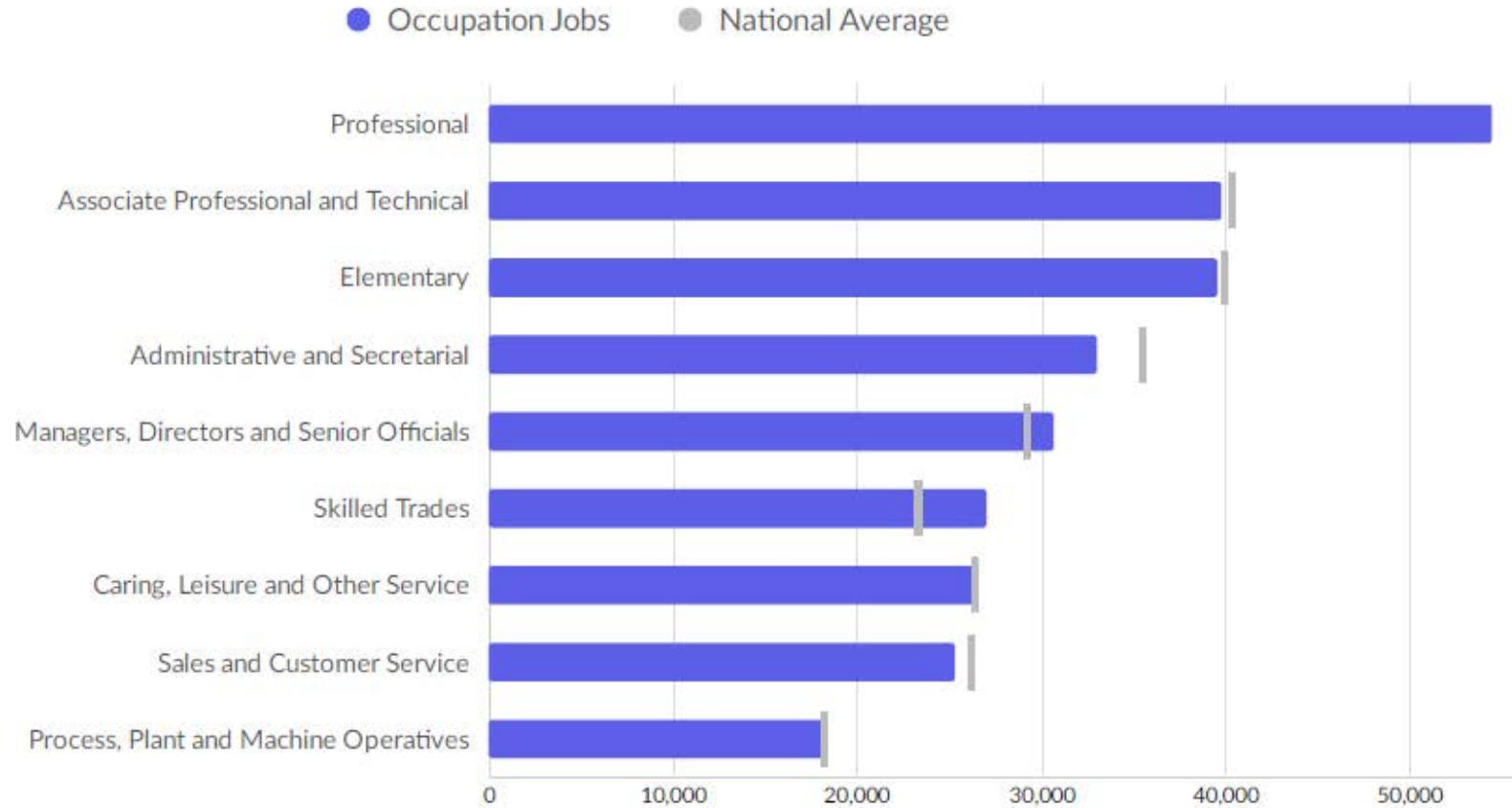


Industry	2019 Jobs	2020 Jobs	Change in Jobs (2019-2020)	% Change	2020 Wages Per Worker
Human health and social work activities	39,949	39,247	-702	-2%	£21,991
Arts, entertainment and recreation	7,559	7,187	-372	-5%	£17,412
Information and communication	10,957	10,747	-210	-2%	£37,036
Administrative and support service activities	21,516	21,369	-147	-1%	£23,542
Agriculture, forestry and fishing	3,636	3,517	-119	-3%	£22,806
Education	22,918	22,829	-89	0%	£25,028
Wholesale and retail trade; repair of motor vehicles and motorcycles	46,848	46,775	-73	0%	£20,952
Accommodation and food service activities	25,876	25,836	-40	0%	£15,295
Manufacturing	36,301	36,266	-35	0%	£34,128
Transportation and storage	8,732	8,704	-28	0%	£26,706

October 2021

Source: EMSI/Burning Glass

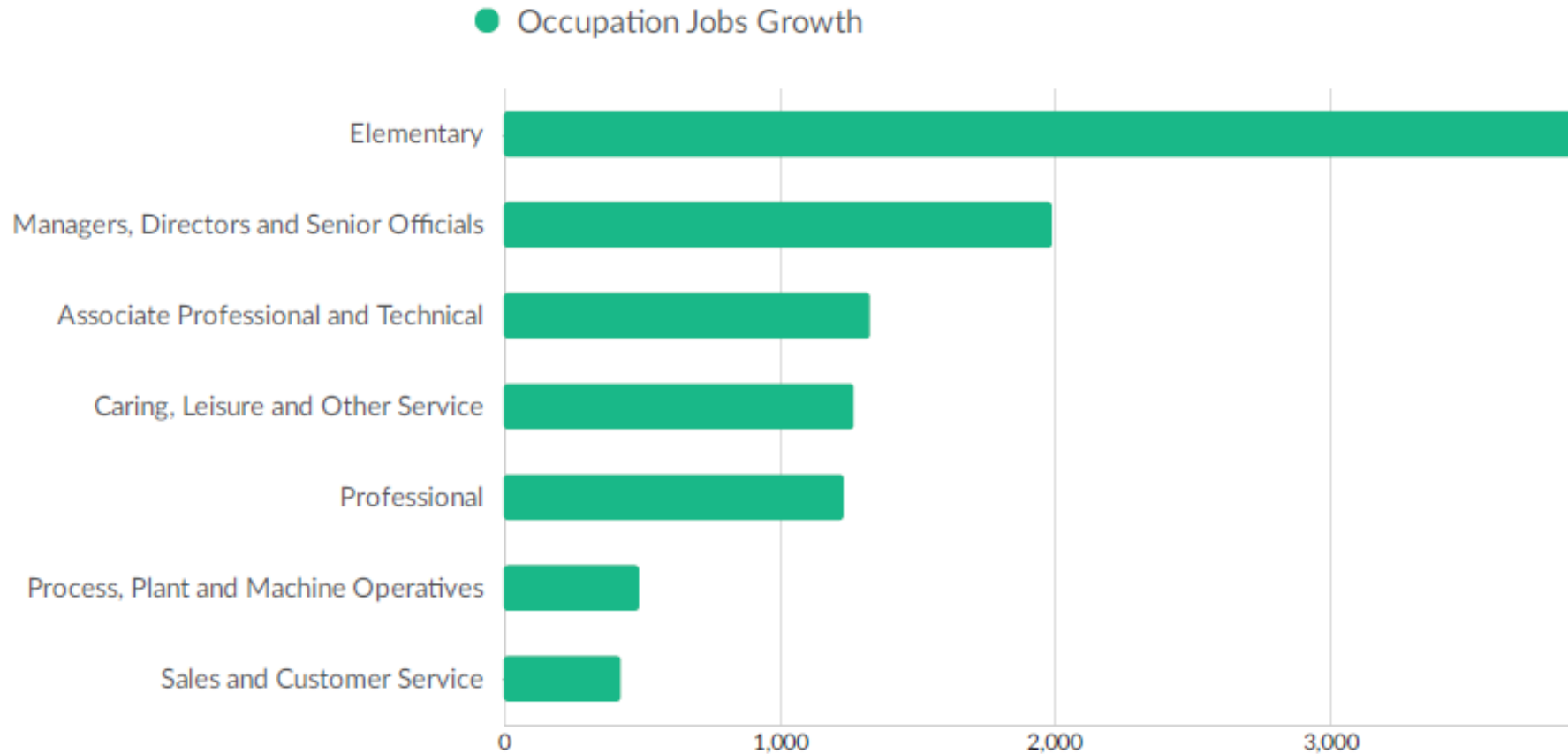
Largest occupations in Gloucestershire



October 2021

Source: EMSI/Burning Glass

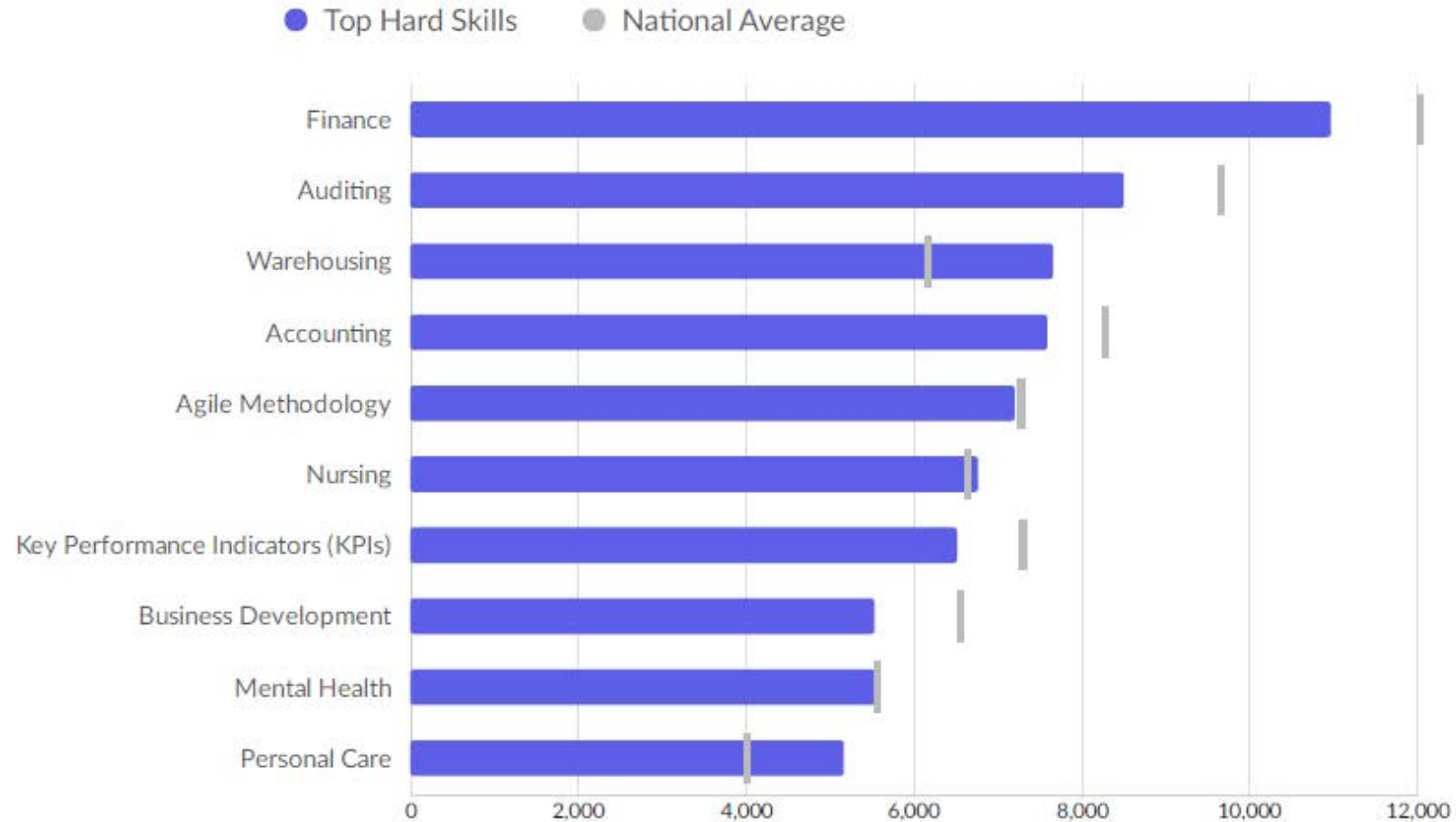
Top growing occupations in Gloucestershire



October 2021

Source: EMSI/Burning Glass

Hard skills in demand in Gloucestershire



October 2021

Source: EMSI/Burning Glass



<https://www.gloscareershub.com/>